



CATALOGUE 2023



*Equipment designed for  
equine dentistry*

*Wajtek*

# PREAMBLE

---



Our company Equus Dental Harmony is a French company, created in 2011 headed by François Dall'Osteria, practitioner in equine dentistry. Following his training, he realized that the equipment available on the market was not always suitable for horses and practitioners. He therefore invented and developed, over the years, the products presented in this catalog (apart from stomatology, speculums and some accessories).

Motors, drive cable, water cooling handpieces, Quick System handpieces, head supports, Equus Head Light, Equus Jet, Connect range, the products were all invented, developed and manufactured by our society. This catalog isn't exhaustive, don't hesitate to contact us if you don't find the product you are looking for.

Our philosophy is to improve the quality of the material in order to bring more comfort to the horse but also for the practitioner. Whether during care, maintenance, or maintenance.

Our tools are:

- ✓ considered in relation to the needs of practitioners and horses,
- ✓ tested by practitioners before being offered on the market,
- ✓ safe,
- ✓ practical to use,
- ✓ French made,
- ✓ very good quality,
- ✓ modular and interchangeable.

We have made the choice for our handpieces, modulation and interchangeability, despite a higher purchase cost. This represents:

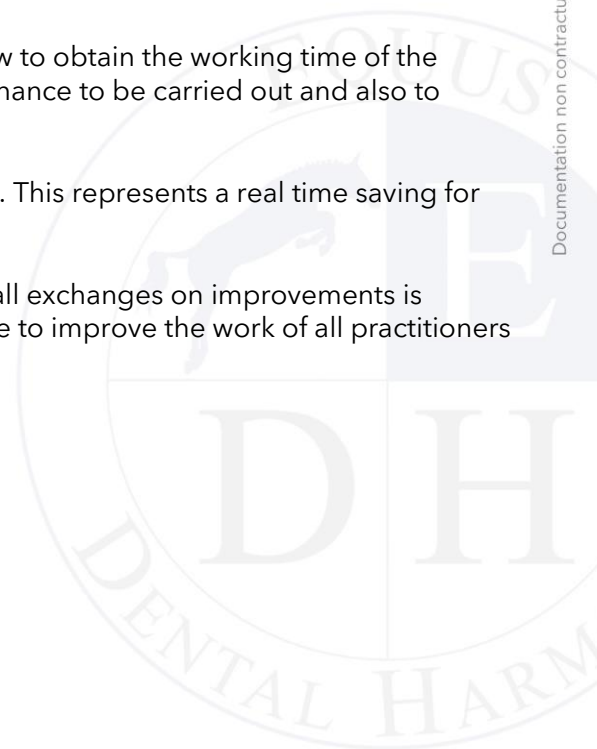
- ✓ saving space in your tools, a single extension is enough to fit all the heads in the range,
- ✓ a gain during the interview. The heads are fitted with a grease nipple, this makes it possible to extend the service life before maintenance.
- ✓ a gain when replacing wear. Your disc needs to be changed? You can do it yourself. No need to waste time on expeditions.
- ✓ a gain during maintenance. If the head must be sent for maintenance, you keep your handle and your extension and you can continue to use your other heads.

Our motors and our Equus Jet are equipped with electronics which allow to obtain the working time of the material. It is a valuable tool that allows you to know the types of maintenance to be carried out and also to detect problems.

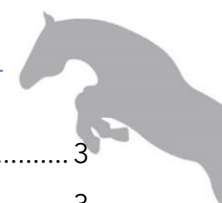
On products in the Connect range, updates can be performed remotely. This represents a real time saving for you and a reduction in shipping costs.

Our philosophy being to continue to develop and perfect the material, all exchanges on improvements is essential for us. We are not only manufacturers, but are there to continue to improve the work of all practitioners of equine dentistry.

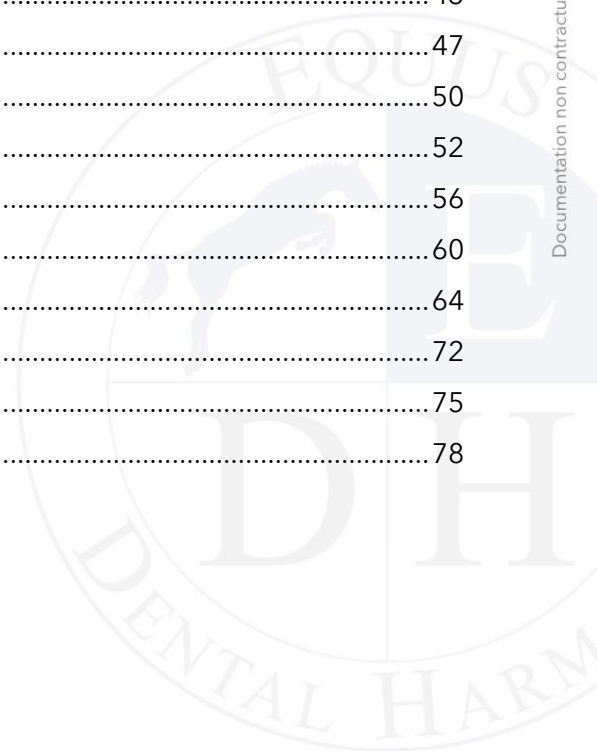
-  INNOVATIVE
-  QUALITY
-  LONGÉVITY
-  PRATICALITY
-  INTERCHANGEABILITY

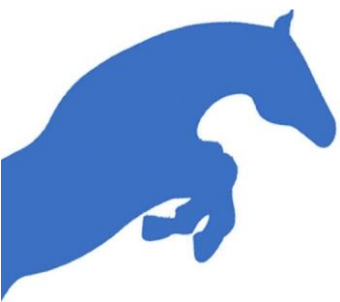






Power tools .....	3
Power tools .....	3
Equus Liberty Connect .....	4
Equus Liberty motor .....	8
Wired motor .....	11
Comparison of motors.....	12
Drive cable and adaptors .....	13
Spray System.....	14
The most common sets .....	16
Extensions .....	17
Heads and their diamond burrs .....	17
Compressors .....	23
Quick System .....	24
The most common sets .....	26
Extensions .....	27
Heads and their diamond burrs .....	27
Equus Connect Sets .....	36
Equus Liberty sets .....	38
Wired sets .....	39
Diastema pump cleaning and rinsing system for horse's mouth .....	40
Basic system .....	40
Equus Jet.....	41
Comparison Equus Jet .....	43
Connect range .....	47
Head light and lighting .....	50
Speculums and accessories.....	52
Head support .....	56
Endoscopy.....	60
Stomatology .....	64
Dental care products.....	72
Accessories.....	75
Cleaning products .....	78





# POWER TOOLS

All power tools are developed by our company.

Always with the aim of developed ease of use, we have an "EDH Quick Flex" coupling that allows you to quickly connect your drive cable to the motor. Its quick coupler is very practical on a daily basis.

The different coupling offered on our motors is:



EDH Quick Flex



Foredom



HDE

Do you want to equip yourself with a motor with EDH coupling while occasionally continuing to use your old equipment? No problem, we offer adapters that allow you to use the following hoses:

Motor



EDH Quick Flex



Dremel

Drive cable



Foredom



HDE





## Equus Liberty Connect motor

EDH coupling ref EL-ELC02, freedom coupling ref EL-ELCG03, HDE coupling ref EL-ELCG04

The **Equus Liberty Connect motor** has been specially designed for equine dentists and veterinarians. Its compact and wireless model offers great freedom of movement while having a very high efficiency. The motor and the battery are incorporated in a shock-resistant aluminium casing. Its plus: it is equipped with a Bluetooth system which allows you to use all the products in the Connect range.

It is available with an EDH, Freedom or HDE coupling and is sold with one battery and its charger.



### The motor:

- ✓ wireless to keep as much freedom,
- ✓ electric motor with very high efficiency, extremely silent and offering exceptional performance at very low speed. The maximum speed is 17,000 rpm,
- ✓ motor torque adjustment,
- ✓ protection of the horse's mouth and considerable improvement in the life of the equipment thanks to a clutch electronic,
- ✓ electronic assisted regulation of the power of the handpiece,
- ✓ equipped with a control screen, allowing adjustments and operation,
- ✓ digital management with DSP microprocessor,
- ✓ works in both directions of rotation,
- ✓ equipped with a Bluetooth which allows you to use all the products in the Connect range,
- ✓ water pump on / off (water pump in option).

### The battery:

- ✓ compact,
- ✓ 4 Ah, 50,4 V,
- ✓ Fast charge electronic charger.

It's possible to use a power supply to replace the battery.



**watch the video**

### Possibles supports (in option):



Backpack



Belt



Hanging pocket



Suspension ring

Thanks to the belt, the motor settings buttons are directly accessible. If you opt for a backpack or remote use, it's recommended to use a foot pedal or a remote control.



The **Equus Liberty Connect motor** is part of the Connect range and allows you to communicate with all the products in the range using Bluetooth. A real gain of freedom!

Your motor can communicate for example, with the **Equus Jet Connect** rinsing system. For example, a simple step on the pedal can start or vary the flow of the pump at the same time as your motor. If you don't wish to opt for the Equus Jet Connect, it's possible to add a small water pump to the motor for the water cooling on the handpieces. Ref EL-PERFVI.

## Additional battery for Equus Liberty Connect motor V4A model

ref EL-BELC08

Lithium-Ion battery, incorporated in an aluminium case impact resistant.

4Ah, 50.4V.

Quick charge.



## Extension lead

ref EL-ELCR04

2 meters extension allowing connection of the battery away from the motor. Other sizes are available to order.



## Motor socket for trolley

ref EL-ELCC03

This motor socket is to be fixed on your trolley. The socket is sold without the fixing screws.



## V4A battery charger

ref EL-CL13C

Replacement charger for V4A battery.



## Power supply

ref EL-TEL01

Allows the motor to be powered from the mains.



## Equus Liberty Connect backpack

ref EL-GELC03

Designed symmetrically, it allows easy use for a right-handed or a left-handed person. Equipped with foam and mesh fabric, they are pleasant on a daily basis even in summer. The Cordura fabric is rain resistant and machine washable.



## Equus Liberty Connect belt

ref EL-CELC02

Like the backpack, the belt has been designed symmetrically to allow easy use for right and left handed users. Equipped with foam and mesh fabric, it is pleasant on a daily basis even in summer. The outer fabric is Cordura, rain resistant and machine washable. You can complete the belt with suspenders if you wish.







## Equus Liberty Connect belt straps

ref EL-BELCOS

If you want to work with your motor on your belt while distributing the weight on both the hips and shoulders, suspenders will be your ally.

Adjustable both in front and behind, you can position them as you wish.



## Equus Liberty Connect hanging pocket

ref EL-PELC04

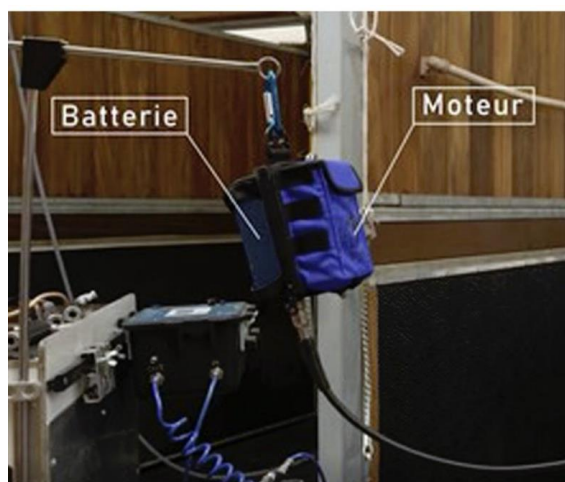
The hanging pocket was developed for people who do not want to carry the motor with them.

The pocket allows the battery and the motor to be hung together on a high support.

The cables are protected inside the pocket.

The Cordura fabric is water resistant and machine washable.

The pocket is sold with the attachment carabiner.



## Equus Liberty Connect suspension ring

ref EL-EDH619

The suspension ring allows you to hang the motor directly without protection. It is also possible to fix it on the battery.

Attention, use the suspension ring only if you work with a trolley. If you opt for a suspension ring, you will need at least an extension lead to connect the battery away from the motor.

Also available is an Equodent motor socket kit.

These products are located after the battery.

If the length of the cable is not suitable for you, we can make a custom one.



## Equus Liberty motor

EDH coupling ref EL-ELCS2.1, freedom coupling ref EL-ELCS2.2, HDE coupling ref EL-ELCS2.3

The Equus Liberty motor was specifically designed for equine dentists and veterinarians. Its compact and wireless model offers great freedom of movement while having a very high performance. The motor is incorporated in a shock-resistant aluminium casing. It's available with EDH, freedom or HDE coupling (on order). It's sold with two batteries, a battery base, a charger and a belt.

### The motor:

- ✓ wireless to keep as much freedom,
- ✓ electric motor with very high efficiency, extremely silent and offering exceptional performance at very low speed. The maximum speed is 10,000 rpm,
- ✓ motor torque adjustment,
- ✓ protection of the horse's mouth and considerable improvement in the life of the equipment thanks to a clutch electronic,
- ✓ electronic assisted regulation of the power of the handpiece,
- ✓ equipped with a control screen, allowing adjustments and operation,
- ✓ digital management with DSP microprocessor,
- ✓ works in both directions of rotation,

### The battery:

- ✓ compact,
- ✓ 2.5 Ah, 40 V,
- ✓ Fast charge electronic charger.

For more autonomy, the motor can be used with the battery model V4A. This is a 4Ah, 50.4V battery. It's possible to use a power supply to replace the battery.

### The support:

This motor is sold with the belt.  
This is the same belt as the Equus Liberty Connect to which you can add the braces.

### Differences with Equus Liberty Connect:

- ✓ doesn't have Bluetooth,
- ✓ the maximum speed is 10,000 rpm,
- ✓ the water pump option isn't available.

This motor is **scalable**. If you want to switch to the Equus Liberty Connect, this is possible.



# EQUUS LIBERTY MOTOR ACCESSORIES



## Additional battery VM2.5A model

ref EL-BELC11

Lithium-Ion battery, 2.5 Ah, 40 V. Quick charge.



## Additional battery V4A model

ref EL-BELC08

Lithium-Ion battery, incorporated in an aluminium case impact resistant.

4Ah, 50.4V.

Quick charge.



## VM2.5A battery charger

ref EL-CBMA

Replacement charger for VM2.5A battery.



## V4A battery charger

ref EL-CL13C

Replacement charger for V4A battery.



## Extension lead

ref EL-ELCR04

2 meters extension allowing connection of the battery away from the motor. Other sizes are available to order.



## Battery base VM2.5A model

ref EL-SBM02

Base for connecting VM2.5A model batteries to the Equus Liberty motor.



## Power supply

ref EL-TEL01

Allows the motor to be powered from the mains.







## Equus Liberty Connect belt

ref EL-CELC02

Like the backpack, the belt has been designed symmetrically to allow easy use for right and left handed users. Equipped with foam and mesh fabric, it is pleasant on a daily basis even in summer. The outer fabric is Cordura, rain resistant and machine washable.

You can complete the belt with suspenders if you wish.



## Equus Liberty Connect belt straps

ref EL-BELCOS

If you want to work with your motor on your belt while distributing the weight on both the hips and shoulders, suspenders will be your ally.

Adjustable both in front and behind, you can position them as you wish.



### Wired motor

EDH coupling ref MOT-530W2, freedom coupling ref MOT-530W1

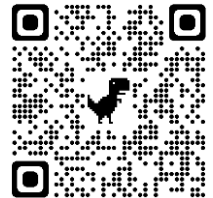
This 220V, 530 watt motor is quiet. Its speed varies from 0 to 29,000 rpm. In order to vary the speed, the use of a wired variation pedal is mandatory.

If you want to opt for a wireless pedal or a remote control, this is possible thanks to the Equus Dimmer Box which will make the link between your motor and the wireless pedal and / or remote control.

You can find information on the Dimmer in the Connect range.

The motor is equipped with a suspension ring. Equipped with EDH Quick Flex quick coupler for EDH coupling, or available with freedom coupling.

Weight: 1,4 kg



**watch the video**

### Equus Foot Pedal

Ref FP-FD20 for the 220V version, ref FP-FP20US for the 110V version

Equus Foot Pedal is the first connected pedal on the market.

It allows the electronic regulation of your 220V or 110V motors for equine dentistry, the palette allows you to vary the intensity of a motor.

You have a choice in the use of motors.

The pedals are already configured with the following two motors:

- Equus 220V, 29,000 rpm,
- Suhner 300W, 28,000 rpm,
- Suhner (HDE) S00W, 9,000 rpm,
- Kress Dental Vet 530W 29,000 rpm.

You can configure all the motors on the market up to 600 watts.

The application runs on Android, it allows you to configure the desired motor and change the motor response work curve. All this from your tablet or smartphone, a gain of freedom and practicality.

Power cable Length: 3m

Cable Length: for motor connection: 1.5m



		Equus Liberty Connect	Equus Liberty	Wired motor
Coupling	EDH Quick Flex	✓	✓	✓
	Foredom	✓	✓	✓
	HDE	✓	✓	
Power supply	Power supply type	wireless	wireless	wired
	Possibility of using a transformer	✓	✓	
	Compatible batteries	4Ah 50,4V	2.5Ah 40V 4Ah 50,4V	
Speed	rpm	Tp to 17,000	Up to 10,000	Up to 29,000
Setting	2 directions of rotation	✓	✓	
	Motor torque adjustment	✓	✓	
	Electronic clutch, torque limiter	✓	✓	
	Display screen for general settings	✓	✓	
	Bluetooth - Connect range	✓		
Remote use	Remote	✓		
	Wired pedal			✓
	Wireless single foot pedal	✓		✓**
	Wireless double foot pedal	✓		✓**
Water	Cooling possible (Equus Jet Connect)	✓		✓**
Supports	Belt	✓	✓	
	Backpack	✓*		
	Hanging pocket	✓*		
	Hanging ring	✓*		✓

\*: mandatory use with remote control

\*\*: via the Dimmer Box Connect and a pedal



# DRIVE CABLE AND ADAPTORS

- ✓ flexible but robust sheath,
- ✓ 5mm transmission cable,
- ✓ protective sleeves reinforcing the sheath at the connectors,
- ✓ available in sizes 90cm, 100cm, 120cm, 140cm and 150cm,
- ✓ others measures on request.

watch the video



Choose your motor coupling:



EDH Quick Flex



Foredom



Dremel



HDE / Vet-Design /  
Dynamic

then the handpieces coupling:



EDH Spray  
with water and air



EDH Quick System,  
Square drive

Kdrive



HDE /  
Vet-Design



Dynamic



handpieces motor	EDH Aqua without water	EDH Aqua with water	EDH Quick System Square drive	Kdrive	HDE Vet-Design	Dynamic
EDH Quick Flex	FLEX-EASB	FLEX-EAS	FLEX-EBS	FLEX-EDHKD	FLEX-EDHHDE	FLEX-EDHDY
Foredom	FLEX-FEASB	FLEX-FEAS	FLEX-FEBS	FLEX-FKD01	FLEX-FHDE	FLEX-FDY
Foredom adjustable	FLEX-FREASB	FLEX-FREAS	FLEX-FREBS	FLEX-FKDR02	FLEX-FRHDE	FLEX-FRDY
Dremel	FLEX-DEASB	FLEX-DEAS	FLEX-DEBS	FLEX-DKD	FLEX-DHDE	FLEX-DDY
HDE / Vet- Design / Dynamic	FLEX-DEEASB	FLEX-HDEEAS	FLEX-HDEEDH	FLEX-HDEKD	FLEX-HDEHDE	FLEX-HDEDY

Do you want to keep your old equipment? No problem. For occasional use, we offer adapters.

ref FRA-ABS10  
coupling:  
motor: Equus EDH  
drive cable: dremel



ref FRA-EBS-14  
coupling:  
motor: Equus EDH  
drive cable: HDE



ref FRA-EBS12  
coupling:  
motor: Equus EDH  
drive cable: foredom

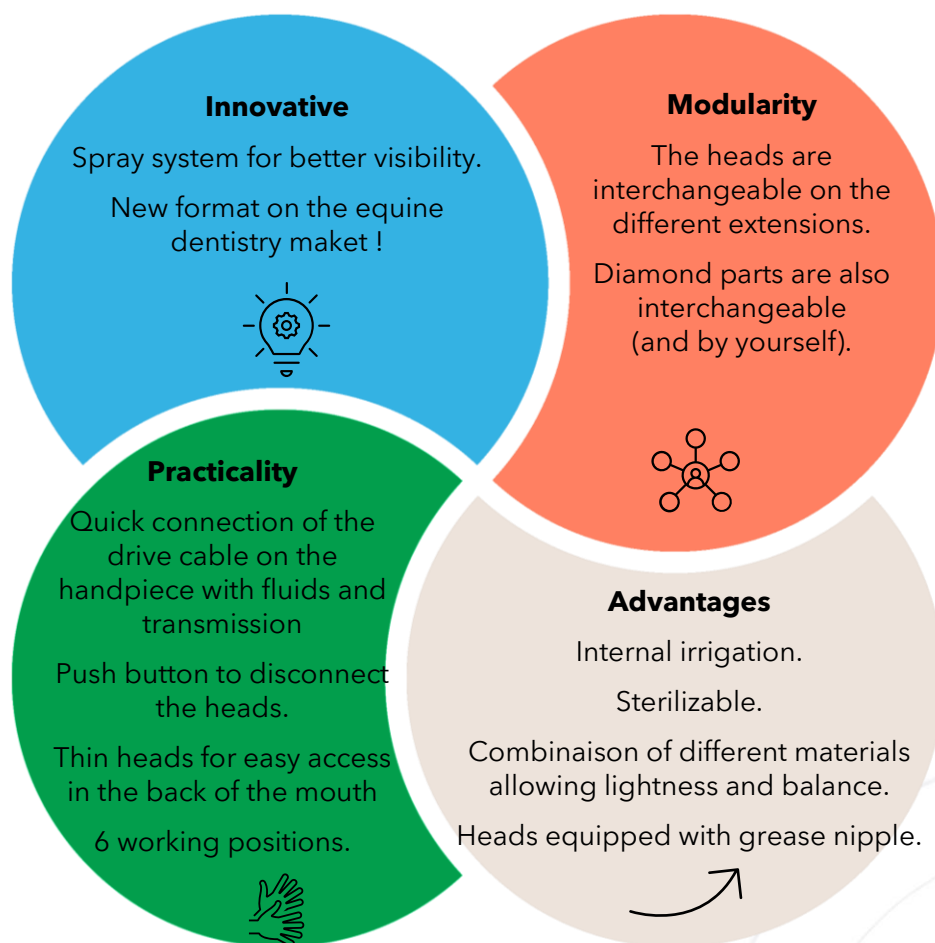


Equus Dental Harmony has developed a new generation of watercooling handpieces equipped not only with water but also with air!

The combination of water and air cools the horse's teeth while greatly reducing dental dust. Thanks to the low amount of water required, visibility inside the horse's mouth will be optimal, allowing you to carry out more precise work while providing greater comfort.

The Spray System can be used with the combination of air and water or only with water.

By its materials, the interchangeability, the robustness and the fineness of the heads, you will be conquered by this new system.



The Spray System will be optimal with the Connect range !



With a handle, choose the desired extension, head and diamond piece and create your own set.

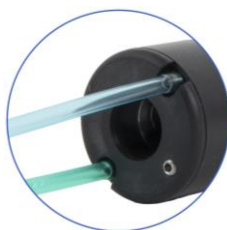


Multi-brand compatibility:

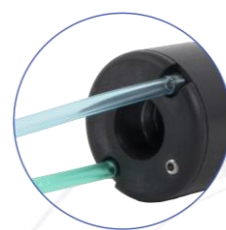
The spray system is available with our connectors, which allow you to connect the transmission and the fluids of the drive cable to your handpiece in a single gesture, and also with the Kdrive connector.



EDH Spray System



EDH Quick System



Kdrive

The different diamond grains:

Diamond burr are available with different diamond grade. Depending on the desired use, we offer:

Grade 0: very fine grain

Grade 1: fine grain

Grade 2: medium grain

Grade 3: coarse grain

Grade 3N: natural diamond coarse grain

Natural diamond is sharper at first and will round off with use. The synthetic diamond is more rounded so will be less sharp at first than the natural diamond.



## ➤ THE MOST COMMON SETS

### Equus Spray Disc 4000

ref EFRA-ESS4050

L'Equus Spray Disc 4000 is composed of:

- ✓ A Spray System curved extension,
- ✓ a Spray System disc head,
- ✓ a diamond disc grade 2.

Extension length: 44cm

Total length 52 cm

Disc diameter: 28.73 mm

Head height with disc: 22.3 mm



### Equus Spray applecore 5000

ref EFRA-ESS5050

L'Equus Spray applecore 5000 is composed of:

- ✓ a Spray System long straight extension,
- ✓ a Spray System applecore head,
- ✓ an applecore grade 2, size of your choice.

Extension length: 41 cm

Length with applecore head: 49 cm

Weight: 495 grams



### Equus Spray Diastema 6000

ref EFRA-ESS6050

L'Equus Spray diastema 6000 is composed of:

- ✓ a Spray System medium straight extension,
- ✓ a Spray System diastema head,
- ✓ a 3 mm diastema burr with the end isn't diamond-cut,
- ✓ a 3 mm collar.

The Spray System Diastema head is a fine and precise head for the work of diastemas, caries and segmentations.

Extension length: 36 cm

Length with the head: cm



## ➤ EXTENSIONS

A simple press of the button allows you to connect and disconnect your handpiece to your drive cable. The installation of the heads on the different extensions and their positioning changes will be done in 1 second thanks to a push button.

You have 6 working positions.

All Spray System heads are compatible. This allows you to save time by only changing the head.

### Equus Spray handle

ref EDH2020

The Equus Spray handle allows the connection of all heads of the Spray System range.

Ergonomic handle fitted with a quick coupler.

The connection for water is integrated inside.

Length: 15 cm



### Curved extension

ref EDH2043

The extension allows you to connect the Spray System heads of your choice.

Length: 44cm



### Straight extensions

Straight long, length: 41cm, ref EDH2024

Medium straight, length: 36cm, ref EDH2342

The extension allows you to connect the Spray System heads of your choice.



## ➤ HEADS AND THEIR DIAMOND BURRS



All Spray System heads are compatible with Spray System extensions.

They are equipped with grease nipples, which allows you to extend their life and reduce maintenance costs.

They are thin, ideal for easy profiling of the horse's mouth, especially on eleventh and ponies.

The diamond burrs can be changed easily and quickly by the user.

### Spray Disc head

ref EFRA-ESS4000

Maximum disc diameter:  $\pm 29$ mm

Height of the head with the disc in photo:  $\pm 22.3$ mm

Stainless steel.

Head sold without diamond disc.



## Spray small Disc head

ref EFRA-ESS4000-1

Maximum disc diameter:  $\pm 23$ mm

Height of the head with the disc in photo:  $\pm 22.3$ mm

Stainless steel.

Head sold without diamond disc.



### Disc 20 mm

Diameter:  $\pm 20$  mm

Diamond on the top and on the side

Grade 2 ref EDH1404-ENG2

Grade 3 ref EDH1404-ENG3

Compatible with Spray disc head and Spray small disc head



### Disc 23 mm

Diameter:  $\pm 23$  mm

Diamond on the top

Grade 2 ref EDH1529-ENG2

Grade 3 ref EDH1529-ENG3

Compatible with Spray disc head and Spray small disc head



### Disc 26 mm

Diameter:  $\pm 26$  mm

Diamond on the top and on the side

Grade 2 ref EDH1224-ENG2

Grade 3 ref EDH1224-ENG3

Compatible with Spray disc head



### Disc 28 mm

Diameter:  $\pm 28$  mm

Diamond on the top

Grade 1 ref EDH1203-ENG1

Grade 2 ref EDH1203-ENG2

Grade 3 ref EDH1203-ENG3

Grade 3N ref EDH1203-ENG3N  
Compatible with Spray disc head

## Spray Applecore head

ref EFRA-ESS5000

This head allows you to use applecore and different burrs (canine, dual, diastema).

The tool set for changing diamond burrs is the same as for the disc head.

Stainless steel.

Head sold without diamond applecore.



### Ø12mm applecore

Diameter:  $\pm 12$  mm

Diamond around

Grade 2 ref EDH2401-ENG2



### Ø14mm applecore

Diameter:  $\pm 14$  mm

Diamond around

Grade 2 ref EDH1225-ENG2



### Ø17mm applecore

Diameter:  $\pm 17$  mm

Diamond around

Grade 2 ref EDH1212-ENG2



### Ø19mm applecore

Diameter:  $\pm 19$  mm

Diamond around

More curved in the middle

Grade 2 ref EDH1212+-ENG2



### Dual canine applecore

Diameter:  $\pm 17$  mm

Diamond around and the front

Grade 2 ref EDH1437-ENG2



### Canine burr

Diamond inside

Grade 1 ref EDH1439-ENG1



## Cylindrical burr

Diameter:  $\pm 11$  mm  
Diamond around  
Grade 2 ref EDH1737-ENG2



## All Quick 3 mm diastema burr

Diamond end  
Diameter: 3 mm  
Length:  $\pm 20$  mm  
Grade 1 natural  
ref EDH1469-ENG1



## Quick 3 mm diastema burr

Not diamond end  
Diameter: 3 mm  
Length:  $\pm 20$  mm  
Grade 1 natural  
ref EDH1489-ENG1



## All Quick 4 mm diastema burr

Diamond end  
Diameter: 4 mm  
Length:  $\pm 20$  mm  
Grade 1 natural  
ref EDH1470-ENG1



## Quick 4 mm diastema burr

Not diamond end  
Diameter: 4 mm  
Length:  $\pm 20$  mm  
Grade 1 natural  
ref EDH1490-ENG1



## 33C buccal burr

Diameter:  $\pm 33$  mm  
Equipped with a rotating guard  
Grade 2 ref EDH2367-ENG2



## 33 buccal burr

Diameter:  $\pm 37$  mm  
Grade 2 ref EDH2361-ENG2



## 40C buccal burr

Diameter:  $\pm 40$  mm  
Equipped with a rotating guard  
Grade 2 ref EDH1766-ENG2



## Short conical interdental burr

Length:  $\pm 10$  mm  
Grade 1 ref EDH2379-ENG1



## Long conical interdental burr

Length:  $\pm 15$  mm  
Grade 1 ref EDH2380-ENG1

## Tools set Spray

ref EFRA-SCOUTIL

Tools set allow you to disassemble the discs and applecore of the Spray System range in order to interchange or change them.





## Spray diastema head

ref EDH2557

Fine and precise working head for the work of diastemas, caries and segmentations.

Different diamond and tungsten carbide burs are available for the diastema head. Be careful to use the correct size collar.

Stainless steel.

Head sold equipped with a 3 mm collar, changing tool set, without burr.



### Diastema diamond burr

Necessary collar: 3 mm  
Diameter: 3 mm  
Length: 38.4 mm  
Grade 1 ref EDH2195



### Diastema diamond burr

Necessary collar: 3.175 mm  
Diameter: 3 mm  
Length: 38.4 mm  
Grade 1 ref EDH2197



### Diastema diamond burr smooth end

Necessary collar: 3 mm  
Diameter: 3 mm  
Length: 38.4 mm  
Grade 1 ref EDH2196



### Diastema diamond burr smooth end

Necessary collar: 3.175 mm  
Diameter: 3 mm  
Length: 38.4 mm  
Grade 1 ref EDH2198



### Short segmentation burr

Necessary collar: 3.175 mm  
Diameter: 3 mm  
Length: 38 mm  
ref FRA-FSLR113



### Medium segmentation burr

Necessary collar: 3.175 mm  
Diameter: 3 mm  
Length: 50 mm  
ref FRA-FSM01



### Long segmentation burr

Necessary collar: 3.175 mm  
Diameter: 3 mm  
Length: 75 mm  
ref FRA-FSP11



### Collar for diastema head

Collar for carbide burs on the Equus Quick diastema  
2.35 mm ref FRA-6PD2.35  
3 mm ref FRA-6Pd6  
3.175 mm ref FRA-6PD3.175



### Short ball tungsten carbide

Necessary collar: 2.35 mm  
Diameter: 1.8 mm  
Length: 34 mm  
ref FRA-FCRC18



### Short ball tungsten carbide

Necessary collar: 2.35 mm  
Diameter: 2.3 mm  
Length: 34 mm  
ref - FRA-FCR2.3



### Long ball tungsten carbide

Necessary collar: 2.35 mm  
Diameter: 1.8 mm  
Length: 44.5 mm  
ref FRA-FCRL18



### Long ball tungsten carbide

Necessary collar: 2.35 mm  
Diameter: 2.3 mm  
Length: 44.5 mm  
ref FRA-FCRL23



### Lindemann

Necessary collar: 2.35 mm  
Diameter: 2 mm  
Length: 34 mm  
ref FRA-FLL234



### Lindemann

Necessary collar: 2.35 mm  
Diameter: 2 mm  
Length: 55 mm  
ref FRA-FLL2

## Spray straight coupler head

ref EDH2542

This head is equipped with a quick coupler and internal irrigation.  
Different guard protection models are available depending on the burrs used, with irrigation.

Stainless steel.  
Head sold without Diamond part and without casing.

The diamond parts and their guard protection:



### Long cylindrical burr D11

Flat tip with diamond  
Diameter:  $\pm 11$  mm

Grade 2 ref EDH2376-EN



### Short cylindrical burr D11

Rounded tip with diamond  
Diameter:  $\pm 11$  mm

Grade 2 ref EDH1253-EN



### Long cylindrical burr D15

Flat tip with diamond  
Diameter:  $\pm 15$  mm

Grade 2 ref EDH2377-EN  
Grade 3 ref EDH2377-EN



### Short cylindrical burr D15

Flat tip with diamond  
Diameter:  $\pm 15$  mm

Grade 2 ref EDH2378-EN



### Short cylindrical burr D15

Rounded tip with diamond  
Diameter:  $\pm 15$  mm

Grade 2 ref EDH1468-EN  
Grade 3 ref EDH1468-ENG3



### Cylindrical conical burr

Diameter:  $\pm 15$  mm

Grade 2 ref EDH1255-EN



**10mm ball burr**

Diameter:  $\pm 10$  mm

Grade 1 ref EDH2364-EN



**12mm ball burr**

Diameter:  $\pm 12$  mm

Grade 1 ref EDH1345-EN



**19mm ball burr**

Diameter:  $\pm 19$  mm

Grade 1 ref EDH1239-EN



**30mm diamond disc**

Diamond on the top and the edges

Thickness:  $\pm 0.65$ mm

Diameter:  $\pm 30$  mm

Grade 0 ref DISC30



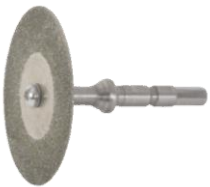
**40mm diamond disc**

Diamond on the top and the edges

Thickness:  $\pm 1.06$ mm

Diameter:  $\pm 40$  mm

Grade 0 ref EDH1448



**40mm diamond disc**

Diamond on the top and the edges

Thickness:  $\pm 0.56$ mm

Diameter:  $\pm 40$  mm

Grade 0 ref DISC40



**50mm diamond disc**

Diamond on the top and the edges

Thickness:  $\pm 1.98$  mm

Diameter:  $\pm 50$  mm

Grade 0 ref EDH2009



**50mm diamond disc**

Diamond on the top and the edges

Thickness:  $\pm 0.60$  mm

Diameter:  $\pm 50$  mm

Grade 0 ref DISC50



**Guard protection for disc**

Available in size 50mm.

ref EDH2008



**Dual canine burr**

Grade 2 ref EDH1438-EN



**Canine burr**

Grade 1 ref EDH1440

## ➤ COMPRESSORS

### Oil-free compressor 35l/min

ref COMP35L

Mini oil-free compressor with air tank (under pressure). The 0 - 10 Bar (0-100 PSI) pressure regulator is equipped with a filter and a pressure gauge.

Silent compressor.

Thanks to its low weight, it is portable.

The set includes:

- 1x compressor with tank
- 1x pressure regulator output, with filter and pressure gauge
- 1x power cable
- 1x instructions for use

Specifications:

- \* 3.5L pressure container, guarantees air balance
- \* flow: 35 l/min
- \* adjustable pressure: from 0 bar to 6 bar
- \* power: 186watts
- \* product dimensions (L x W x H): 32.99 x 15.01 x 16.99 cm
- \* weight: 7.3 kg
- \* voltage: 220 Volts
- \* noise level: 45 dB



### Oil compressor 17l/min

ref COMP

Oil-lubricated piston compressor with a compressed air tank for 1.5 liters.

The 0 - 6 Bar (0-87 PSI) pressure regulator is equipped with a filter and a pressure gauge.

Very quiet compressor.

The set includes:

- 1x compressor with tank
- 1x pressure regulator output, with filter and pressure gauge
- 1x power cable
- 1x instructions for use

Specifications:

- \* 1.5L pressure container,
- \* flow: 17 l/min
- \* adjustable pressure: from 0 bar to 6 bar
- \* power: 135watts
- \* product dimensions (L x W x H): 45 x 20.1 x 40.5 cm
- \* weight: 17 kg
- \* voltage: 230 V / 50 Hz (optionally in 110Volt - 60Hz)
- \* noise level: 30 dB





Equus Dental Harmony has developed the Quick System handpieces. This system has undeniable advantages.

Always with the aim of providing comfort to the horse and the practitioner, the heads are interchangeable and thin.

Due to its materials, the handpieces are light, and their balance is optimal.

The handles are made of polymer, allowing them to be kept warm in winter (unlike stainless steel) as well as better support. Extensions are available in aluminium or stainless steel. The aluminium undergoes a treatment that reinforces the hardness of the material while maintaining its lightness. The heads are in stainless steel.

Several quick couplers are present on the extensions.

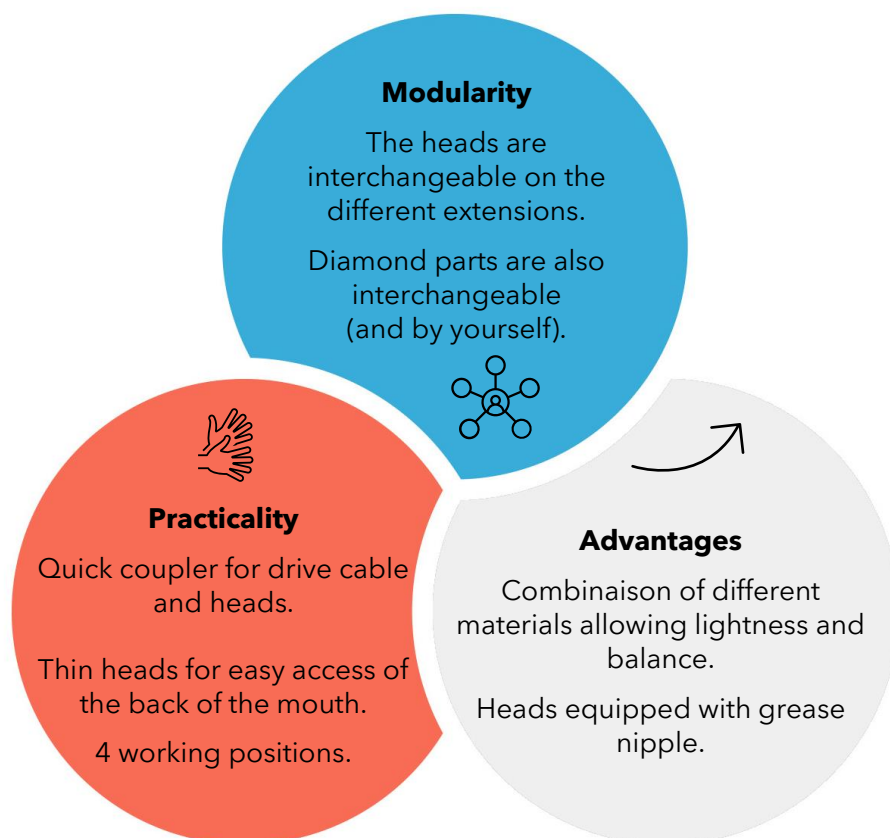
The drive cable quick coupler will allow you to connect your handle to the hose in 1 second. A simple press of the button allows you to connect and disconnect the handpiece.

The quick coupler of the heads allows you to interchange the different heads but also to change the working position of the head in 1 second. An undeniable time saver.

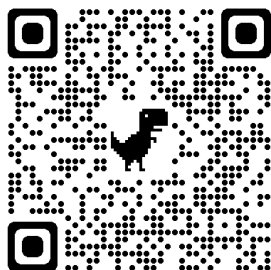
Like the Spray System, we also have special pony diamond pieces.

Our wishes is also to allow the practitioner great autonomy in changing wear parts.

Your diamond piece is damaged? No need to waste time on transport, you can change your part yourself. This is also the case for transmission cables.



watch the video



Choose the desired extension, head and diamond piece and create your own set.



Multi-brand compatibility:



EDH Quick System  
Square drive



Kdrive



HDE /  
Vet-Design



Dynamic

The different diamond grains:

Diamond burr are available with different grade of diamond. Depending on the desired use, we offer:

- Grade 0: very fine grain
- Grade 1: fine grain
- Grade 2: medium grain
- Grade 3: coarse grain
- Grade 3N: natural diamond coarse grain

Natural diamond is sharper at first and will round off with use. The synthetic diamond is more rounded so will be less sharp at first than the natural diamond.

## ➤ THE MOST COMMON SETS

### Equus Quick Disc 4000

ref EFRA-EBS4050

Available with the different couplings offered.

L'Equus Quick Disc 4000 is composed of:

- ✓ a long curved extension in aluminium,
- ✓ a Quick disc head,
- ✓ a diamond disc grade 2.

Extension length: 46.7cm

Total length: 52,5 cm

Disc diameter: 28.73 mm

Head height with disc: 21.82 mm



### Equus Quick Applecore 5000

ref EFRA-EBS5050

Available with the different couplings offered.

L'Equus Quick Applecore is composed of:

- ✓ a long straight extension in aluminium,
- ✓ a Quick applecore head,
- ✓ an applecore grade 2, size of your choice.

Extension length: 44 cm

Length with applecore head: 50 cm



### Equus Quick Diastema 6000

ref EFRA-EBS6050

Available with the different couplings offered.

L'Equus Quick diastema 6000 is composed of:

- ✓ a medium straight extension in aluminium,
- ✓ a Quick diastema head,
- ✓ a 3 mm diastema burr with the end isn't diamond-cut,
- ✓ a 3 mm collar.

Extension length: 44 cm

Length with the head: 50 cm



### Equus Quick Straight fix 7000

ref EFRA-EBS7050E

Available with the different couplings offered.

L'Equus Quick Straight fix is composed of:

- ✓ a medium straight extension in aluminium,
- ✓ a straight fix head,
- ✓ a long burr D15 flat end,
- ✓ a wide guard protection.

The head allows the use of different cylindrical burrs, of different diameters, with or without guard protection.

Small diameter burrs make it easy to reduce dominance on small mouths.

The guard protection isn't inevitable and will set very quickly. The burrs are also easily interchangeable.

Extension length: 44 cm

Length with the head and the guard: 50 cm



## ➤ EXTENSIONS

A simple press of the button allows you to connect and disconnect your handpiece to your drive cable. The installation of the heads on the different extensions and their positioning changes will be done in 1 second thanks also to a quick coupler.

You have 4 working positions.

All Quick System heads are compatible. This allows you to save time by only changing the head.

### Handle

ref EFRA-EBS2000

The handle allows you to connect the different heads so that you can reduce the working distance.

Available with the different couplings offered.

Polymer handle, stainless steel coupler.

Length: 13.5cm



### Curved extensions

Curved standard, length: 48cm, ref EFRA-EBS2310

Medium curve, length: 43cm, ref EFRA-EBS2320

Each extension is available in aluminium and with the different couplings offered.



### Straight extensions

Straight long, length: 44.5cm, ref: EFRA-EBS2300-A

Medium straight, length: 39.5cm, ref: EFRA-EBS2100

Short straight, length: 34.5cm, ref: EFRA-EBS2200

Each extension is available in aluminium and with the different couplings offered.



## ➤ HEADS AND THEIR DIAMOND BURRS



All Quick System heads are compatible with extensions. They are equipped with grease nipples, which allows you to extend their life and reduce maintenance costs. They are thin, ideal for easy profiling of the horse's mouth, especially on elevenhths and ponies. The diamond burrs can be changed easily and quickly by the user.



## Quick disc head

ref EFRA-EBS4000

Maximum disc diameter:  $\pm 29$ mm

Height of the head with the disc in photo:  $\pm 21.5$ mm

Stainless steel.

Head sold without diamond disc.



## Quick small Disc head

ref EFRA-EBS4000-1

Maximum disc diameter:  $\pm 22$ mm

Height of the head with the disc in photo:  $\pm 21$ mm

Stainless steel.

Head sold without diamond disc.



### Disc 20 mm

Diameter:  $\pm 20$  mm

Diamond on the top and on the side

Grade 2 ref EDH1404-ENG2

Grade 3 ref EDH1404-ENG3

Compatible with Quick disc head  
and Quick small disc head



### Disc 23 mm

Diameter:  $\pm 23$  mm

Diamond on the top

Grade 2 ref EDH1529-ENG2

Grade 3 ref EDH1529-ENG3

Compatible with Quick disc head  
and Quick small disc head



### Disc 26 mm

Diameter:  $\pm 26$  mm

Diamond on the top and on the side

Grade 2 ref EDH1224-ENG2

Grade 3 ref EDH1224-ENG3

Compatible with Quick disc head



### Disc 28 mm

Diameter:  $\pm 28$  mm

Diamond on the top

Grade 1 ref EDH1203-ENG1

Grade 2 ref EDH1203-ENG2

Grade 3 ref EDH1203-ENG3

Grade 3N ref EDH1203-ENG3N

Compatible with Quick disc head



### Carbon fiber protection

This carbon fiber protection allows  
you to keep mucous away  
from the working head.

ref EQS-CFCD29

Compatible with Quick disc head  
and Quick small disc head

## Quick Applecore head

ref EFRA-EBS5000

This head allows you to use applecore and different burrs (canine, dual, diastema). The tool set for changing diamond burrs is the same as for the disc head.

Stainless steel.

Head sold without diamond applecore.



## 12mm applecore

Diameter:  $\pm 12$  mm  
Diamond around  
Grade 2 ref EDH2401-ENG2



## Ø14mm applecore

Diameter:  $\pm 14$  mm  
Diamond around  
Grade 2 ref EDH1225-ENG2



## Ø17mm applecore

Diameter:  $\pm 17$  mm  
Diamond around  
Grade 2 ref EDH1212-ENG2



## Ø19mm applecore

Diameter:  $\pm 19$  mm  
Diamond around  
More curved in the middle  
Grade 2 ref EDH1212+-ENG2



## Dual canine applecore

Diameter:  $\pm 17$  mm  
Diamond around and the front  
Grade 2 ref EDH1437-ENG2



## Canine burr

Diamond inside  
Grade 1 ref EDH1439-ENG1



## Cylindrical burr

Diameter:  $\pm 11$  mm  
Diamond around  
Grade 2 ref EDH1737-ENG2



## All Quick 3 mm diastema burr

Diamond end  
Diameter: 3 mm  
Length:  $\pm 20$  mm  
Grade 1 natural  
ref EDH1469-ENG1



## Quick 3 mm diastema burr

Not diamond end  
Diameter: 3 mm  
Length:  $\pm 20$  mm  
Grade 1 natural  
ref EDH1489-ENG1



## All Quick 4 mm diastema burr

Diamond end  
Diameter: 4 mm  
Length:  $\pm 20$  mm  
Grade 1 natural  
ref EDH1470-ENG1



## Quick 4 mm diastema burr

Not diamond end  
Diameter: 4 mm  
Length:  $\pm 20$  mm  
Grade 1 natural  
ref EDH1490-ENG1



## 33C buccal burr

Diameter:  $\pm 33$  mm  
Equipped with a rotating guard  
Grade 2 ref EDH2367-ENG2



## 33 buccal burr

Diameter:  $\pm 37$  mm  
Grade 2 ref EDH2361-ENG2



## 40C buccal burr

Diameter:  $\pm 40$  mm  
Equipped with a rotating guard  
Grade 2 ref EDH1766-ENG2



## Short conical interdental burr

Length:  $\pm 10$  mm  
Grade 1 ref EDH2379-ENG1



## Long conical interdental burr

Length:  $\pm 15$  mm  
Grade 1 ref EDH2380-ENG1

## Tools set Quick

ref EQS-SET001

Tools set allow you to disassemble the discs and applecore of the Quick System range in order to interchange or change them.



## Quick diastema head

ref EFRA-EBS6090

Fine and precise working head for the work of diastemas, caries and segmentations.

Different diamond and tungsten carbide burs are available for the diastema head. Be careful to use the correct size collar.

Stainless steel.

Head sold equipped with a 3 mm collar, changing tool set, without burr.



### Diastema diamond burr

Necessary collar: 3 mm

Diameter: 3 mm

Length: 38.4 mm

Grade 1 ref EDH2195



### Diastema diamond burr

Necessary collar: 3.175 mm

Diameter: 3 mm

Length: 38.4 mm

Grade 1 ref EDH2197



### Diastema diamond burr smooth end

Necessary collar: 3 mm

Diameter: 3 mm

Length: 38.4 mm

Grade 1 ref EDH2196



### Diastema diamond burr smooth end

Necessary collar: 3.175 mm

Diameter: 3 mm

Length: 38.4 mm

Grade 1 ref EDH2198



### Short segmentation burr

Necessary collar: 3.175 mm

Diameter: 3 mm

Length: 38 mm

ref FRA-FSLR113



### Medium segmentation burr

Necessary collar: 3.175 mm

Diameter: 3 mm

Length: 50 mm

ref FRA-FSM01



### Long segmentation burr

Necessary collar: 3.175 mm

Diameter: 3 mm

Length: 75 mm

ref FRA-FSP11



### Collar for diastema head

Collar for carbide burs on the  
Equus Quick diastema

2.35 mm ref FRA-6PD2.35

3 mm ref FRA-6Pd6

3.175 mm ref FRA-6PD3.175



### Short ball tungsten carbide

Necessary collar: 2.35 mm

Diameter: 1.8 mm

Length: 34 mm

ref FRA-FCRC18



### Short ball tungsten carbide

Necessary collar: 2.35 mm

Diameter: 2.3 mm

Length: 34 mm

ref - FRA-FCR2.3



### Long ball tungsten carbide

Necessary collar: 2.35 mm

Diameter: 1.8 mm

Length: 44.5 mm

ref FRA-FCRL18



### Long ball tungsten carbide

Necessary collar: 2.35 mm

Diameter: 2.3 mm

Length: 44.5 mm

ref FRA-FCRL23



### Lindemann

Necessary collar: 2.35 mm

Diameter: 2 mm

Length: 34 mm

ref FRA-FLL234



### Lindemann

Necessary collar: 2.35 mm

Diameter: 2 mm

Length: 55 mm

ref FRA-FLL2



## Quick straight fix head

ref EDH1879

We offer two straight heads.

This model is without quick coupler and is ideal for intensive use.

The guard protection, mandatory during use, will easily clip onto the head thanks to the fixing button.

Stainless steel.

Head sold without diamond part and without guard.

## Quick straight coupler head

ref EDH2054

We offer two straight heads.

This model is equipped with a quick coupler. The head will serve for occasional use.

The guard protection, strongly recommended, will easily clip onto the head thanks to the fixing button.

Stainless steel.

Head sold without diamond part and without guard.

## Quick straight handpiece

EDH coupling ref EFRA-EBS7000.E

Available with the different couplings offered.

The straight handpiece allows you to reduce the working distance in order to work on the front of the mouth.

The handle of the straight handpiece is thinner than the handle compatible with heads.

The hold and grip is different from the straight hand piece the burr being closer to the handle.

Stainless steel.

Sold without diamond burr.



### Long cylindrical burr D11

Flat tip with diamond  
Diameter:  $\pm 11$  mm

Grade 2 ref EDH1517-EN

Use with:

- ✓ Quick straight fix head
- ✗ Quick straight coupler head
- ✗ Quick straight handpiece



### Long cylindrical burr D11

Flat tip with diamond  
Diameter:  $\pm 11$  mm

Grade 2 ref EDH2376-EN

Use with:

- ✗ Quick straight fix head
- ✓ Quick straight coupler head
- ✓ Quick straight handpiece



### Guard for D11 long burr

For the use of the long cylindrical burr D11 flat end

ref EDH1519

Use with:

- ✓ Quick straight fix head
- ✓ Quick straight coupler head
- ✗ Quick straight handpiece



### Wide guard for D11 long burr

For the use of the long cylindrical burr D11 flat end

ref EDH1862

Use with:

- ✓ Quick straight fix head
- ✓ Quick straight coupler head
- ✗ Quick straight handpiece



### Short cylindrical burr D11

Rounded tip with diamond  
Diameter:  $\pm 11$  mm

Grade 2 ref EDH1253-EN

Use with:

- ✗ Quick straight fix head
- ✓ Quick straight coupler head
- ✓ Quick straight handpiece



### Guard for D11 short burr

For the use of the short  
cylindrical D11 rounded tip  
ref EDH2375

Use with:

- ✗ Quick straight fix head
- ✓ Quick straight coupler head
- ✗ Quick straight handpiece



### Long cylindrical burr D15

Flat tip with diamond  
Diameter:  $\pm 15$  mm

Grade 2 ref EDH1787-EN

Grade 3 ref EDH1787-ENG3

Use with:

- ✓ Quick straight fix head
- ✗ Quick straight coupler head
- ✗ Quick straight handpiece



### Long cylindrical burr D15

Flat tip with diamond  
Diameter:  $\pm 15$  mm

Grade 2 ref EDH2377-EN

Grade 3 ref EDH2377-ENG3

Use with:

- ✗ Quick straight fix head
- ✓ Quick straight coupler head
- ✓ Quick straight handpiece



### Guard for D15 long burr

For the use of the long  
cylindrical burr D15 flat end  
ref EDH1788

Use with:

- ✓ Quick straight fix head
- ✓ Quick straight coupler head
- ✗ Quick straight handpiece



### High guard for D15 long burr

For the use of the long  
cylindrical burr D15 flat end  
ref EDH1859

Use with:

- ✓ Quick straight fix head
- ✓ Quick straight coupler head
- ✗ Quick straight handpiece



### Wide guard for D15 long burr

For the use of the long  
cylindrical burr D15 flat end  
ref EDH1861

Use with:

- ✓ Quick straight fix head
- ✓ Quick straight coupler head
- ✗ Quick straight handpiece



### Short cylindrical burr D15

Flat tip with diamond  
Diameter:  $\pm 15$  mm

Grade 2 ref EDH1857-EN

Use with:

- ✓ Quick straight fix head
- ✗ Quick straight coupler head
- ✗ Quick straight handpiece



### Short cylindrical burr D15

Flat tip with diamond  
Diameter:  $\pm 15$  mm

Grade 2 ref EDH2378-EN

Use with:

- ✗ Quick straight fix head
- ✓ Quick straight coupler head
- ✓ Quick straight handpiece



### Guard for D15 short burr

For the use of the short  
cylindrical burr D15 flat end  
ref EDH1858

Use with:

- ✓ Quick straight fix head
- ✓ Quick straight coupler head
- ✗ Quick straight handpiece

**Short cylindrical burr D15**

Rounded tip with diamond

Diameter:  $\pm 15$  mm

Grade 2 ref EDH2256-ENG2

Grade 3 ref EDH2256-ENG3

Use with:

- ✓ Quick straight fix head
- ✗ Quick straight coupler head
- ✗ Quick straight handpiece

**Short cylindrical burr D15**

Rounded tip with diamond

Diameter:  $\pm 15$  mm

Grade 2 ref EDH1468-EN

Grade 3 ref EDH1468-ENG3

Use with:

- ✗ Quick straight fix head
- ✓ Quick straight coupler head
- ✓ Quick straight handpiece

**Guard for D15 short burr**For the use of the short cylindrical D15 rounded tip  
ref EDH2275

Use with:

- ✓ Quick straight fix head
- ✓ Quick straight coupler head
- ✗ Quick straight handpiece

**Cylindrical conical burr**Diameter:  $\pm 15$  mm

Grade 2 ref EDH1255-EN

Use with:

- ✗ Quick straight fix head
- ✓ Quick straight coupler head
- ✓ Quick straight handpiece

**10mm ball burr**Diameter:  $\pm 10$  mm

Grade 1 ref EDH2364-EN

Use with:

- ✗ Quick straight fix head
- ✓ Quick straight coupler head
- ✓ Quick straight handpiece

**12mm ball burr**Diameter:  $\pm 12$  mm

Grade 1 ref EDH1345-EN

Use with:

- ✗ Quick straight fix head
- ✓ Quick straight coupler head
- ✓ Quick straight handpiece

**19mm ball burr**Diameter:  $\pm 19$  mm

Grade 1 ref EDH1239-EN

Use with:

- ✗ Quick straight fix head
- ✓ Quick straight coupler head
- ✓ Quick straight handpiece

**Guard for 19mm ball burr**

ref EDH2369

Use with:

- ✗ Quick straight fix head
- ✓ Quick straight coupler head
- ✗ Quick straight handpiece

**30 mm fine diamond disc**

Diamond on the top and the edges

Thickness:  $\pm 0.65$ mmDiameter:  $\pm 30$  mm

Grade 0 ref DISC30

Use with:

- ✗ Quick straight fix head
- ✓ Quick straight coupler head
- ✓ Quick straight handpiece

**Disc only - 30 mm fine diamond disc**

Diamond on the top and the edges

Thickness:  $\pm 0.65$ mmDiameter:  $\pm 30$  mm

Grade 0 ref DISC30P

Use with:

- ✗ Quick straight fix head
- ✓ Quick straight coupler head
- ✓ Quick straight handpiece

**40 mm fine diamond disc**

Diamond on the top and the edges  
 Thickness:  $\pm 0.56\text{mm}$   
 Diameter:  $\pm 40\text{ mm}$   
 Grade 0 ref DISC40

Use with:

- ✗ Quick straight fix head
- ✓ Quick straight coupler head
- ✓ Quick straight handpiece

**Disc only - 40 mm fine diamond disc**

Diamond on the top and the edges  
 Thickness:  $\pm 0.56\text{mm}$   
 Diameter:  $\pm 40\text{ mm}$   
 Grade 0 ref DISC40P

Use with:

- ✗ Quick straight fix head
- ✓ Quick straight coupler head
- ✓ Quick straight handpiece

**40 mm diamond disc**

Diamond on the top and the edges  
 Thickness:  $\pm 1.06\text{mm}$   
 Diameter:  $\pm 40\text{ mm}$   
 Grade 0 ref EDH1448

Use with:

- ✗ Quick straight fix head
- ✓ Quick straight coupler head
- ✓ Quick straight handpiece

**50 mm fine diamond disc**

Diamond on the top and the edges  
 Thickness:  $\pm 0.60\text{ mm}$   
 Diameter:  $\pm 50\text{ mm}$   
 Grade 0 ref DISC50

Use with:

- ✗ Quick straight fix head
- ✓ Quick straight coupler head
- ✓ Quick straight handpiece

**Disc only - 50 mm fine diamond disc**

Diamond on the top and the edges  
 Thickness:  $\pm 0.60\text{ mm}$   
 Diameter:  $\pm 50\text{ mm}$   
 Grade 0 ref DISC50

Use with:

- ✗ Quick straight fix head
- ✓ Quick straight coupler head
- ✓ Quick straight handpiece

**50 mm diamond disc**

Diamond on the top and the edges  
 Thickness:  $\pm 1.98\text{ mm}$   
 Diameter:  $\pm 50\text{ mm}$   
 Grade 0 ref EDH2009

Use with:

- ✗ Quick straight fix head
- ✓ Quick straight coupler head
- ✓ Quick straight handpiece

**60 mm diamond disc**

Diamond on the top  
 Thickness:  $\pm 3.64\text{ mm}$   
 Diameter:  $\pm 60\text{ mm}$   
 Grade 0 ref EDH2006

Use with:

- ✗ Quick straight fix head
- ✓ Quick straight coupler head
- ✓ Quick straight handpiece

**Guard for 50 mm disc**

ref EDH22010

Use with:

- ✗ Quick straight fix head
- ✓ Quick straight coupler head
- ✗ Quick straight handpiece

**Dual canine burr**

Grade 2 ref EDH1438-EN

Use with:

- ✗ Quick straight fix head
- ✓ Quick straight coupler head
- ✓ Quick straight handpiece

**Canine burr**

Grade 1 ref EDH1440-EN

Use with:

- ✗ Quick straight fix head
- ✓ Quick straight coupler head
- ✓ Quick straight handpiece



We offer several sets. Connect, Liberty, wireless. It's up to you to choose the set you need.

## Connect Quick set

PAC-COQUI01

This set is composed of:

- an Equus Liberty Connect motor with EDH coupling, with its battery,
- an Equus Liberty back pack,
- a wireless single foot pedal Connect,
- a wireless remote control,
- a 100 cm drive cable,
- an Equus Quick Disc 4000 fitted with grade 2 disc, extension in aluminium,
- an Equus Quick Applecore 5000 fitted with grade 2 Ø 17mm applecore, extension in aluminium.

**Quick System**



## Connect Freedom set

PAC-COFREE01

This set is composed of:

- an Equus Liberty Connect motor, coupling of your choice, with its battery,
- an Equus Liberty Connect hanging bag,
- a wireless single foot pedal Connect,
- an Equus Jet Connect with high pressure pump and cooling pump.



## Connect Air Spray set PAC-COFREE02

This set is composed of:

- an Equus Liberty Connect motor with its battery,
- an Equus Liberty Connect hanging bag,
- a 140 cm drive cable,
- an Equus Spray Disc 4000 fitted with grade 2 disc,
- an Equus Spray Applecore 5000 fitted with grade 2 Ø 17mm applecore
- a wireless single foot pedal Connect,
- an Equus Jet Connect with high pressure pump and cooling pump,
- an oil-free compressor 35l/min or in option an oil compressor 17l/min.

**Air Spray System**



Or in option




Several sets are available. The sets presented below are all equipped with the Equus Liberty motor.

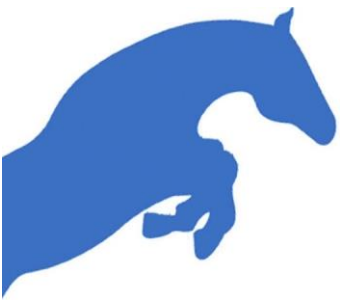


	Quick Disc set	Quick Basic set	Quick Plus set
	PAC-QS03	PAC-QS01	PAC-QS02
Equus Liberty motor with EDH coupling	✓	✓	✓
Equus Liberty belt	✓	✓	✓
120 cm drive cable	✓	✓	✓
Equus Quick Disc 4000 fitted with grade 2 disc	✓	✓	✓
Equus Quick Applecore 5000 fitted with grade 2 Ø17mm applecore		✓	✓
Straight handpiece			✓
19mm ball burr			✓
60mm disc			✓

Several sets are available. The sets presented below are all equipped with the wired motor, 220V, 530 watts.

		Wired set n°1	Wired set n°2	Wired set n°3	Wired set n°4
		MOT-530W2050	MOT-530WP2	MOT-530WP3	MOT-530W4050
	Wired motor 220V coupling	✓ EDH or freedom	✓ EDH	✓ EDH	✓ EDH
	Wired equus foot pedal 220V	✓	✓	✓	✓
	140 cm drive cable		✓	✓	
	Equus Quick Disc 4000 fitted with grade 2 disc		✓	✓	
	Equus Quick Applecore fitted with grade 2 Ø17mm applecore			✓	
	Straight handpiece			✓	
	50mm disc			✓	
	Dimmer box connect				✓





# DIASTEMA PUMP CLEANING AND RINSING SYSTEM FOR HORSE'S MOUTH

In order to be able to work in a clean oral environment, it's essential to rinse the horse's mouth.

You will find simple products as well as Equus Jet, products developed by Equus Dental Harmony. These make it possible to treat oral pathologies, diastemas, food stuffing as well as rinse the mouth of the equine with more comfort and precision.

The Equus Jet Connect being equipped with Bluetooth, it's part of the Connect range and works with all the products in the range.

## Drenching gun

ref PRBV-2S0ML

250ml manual drenching gun, used with one hand, abundant rinsing.

Ideal for rinsing the horse's mouth and making mouthwashes.

Completely removable for cleaning.

Transparent bowl, resistant to boiling water with graduations indelible in relief.

Comes complete with a 10mm cannula, instructions for use and a bottle of silicone oil.

## Drenching syringe

ref ACC-SR400

450 ml manual syringe in plastic tube, rod and plastic handle.

Brass cannula.

Transparent bowl, resistant to boiling water with graduations indelible in relief.

Sold with a 10mm cannula, instructions for use and a bottle of silicone oil.

## Plexiglas drenching syringe

ref ACC-SR300

300ml manual syringe.

Tube in extruded plexiglass, bottom, cap and piston in aluminium

polished. Aluminium rod and handle made of unbreakable and non-deformable plastic.

Marking of indelible black graduations.

Sterilization: resistant to boiling. Completely removable.

Sold with a 10mm cannula, instructions for use and a bottle of silicone oil.



### Equus Jet Eco

ref EJ-EJE02

The Equus Jet Eco is a simple washing system. It's ideal for cleaning the mouth before and after surgery, diastema, food stuffing.

Autonomous, robust and compact, it's equipped with a lead-acid battery.

The maximum pressure is 10 bars and is adjustable only with the triggers.

The Equus Jet Eco is delivered with its charger and a hydraulic assembly including:

- ✓ an input polyurethane hose pipe with strainer and a filter,
- ✓ output spiral polyurethane hose pipe with quick connector on one side and quick connector with valve on other side, allowing you to change the wands without shutting off the pump thus saving you time,
- ✓ one flushing wand,
- ✓ one diastema wand.



### Equus Jet

ref EJ-EJE01

The Equus Jet is ideal for rinsing the mouth before and after surgery, extractions, diastemas, food jams.

Autonomous, robust and compact, it's equipped with a Lithium Ion battery. A colored indicator shows the status of the battery.

It also has an intuitive control panel for settings as well as perfect adjustment of pressure and flow according to the operations carried out.

The maximum pressure is 10 bars and is adjustable on the control panel and with the triggers.

Product advantages:

- ✓ 5 possible pressure levels,
- ✓ connection and disconnection of hoses and nozzles with a quick gesture,
- ✓ an external filter and an internal filter,
- ✓ possibility of using a wired pedal to gradually vary the flow and pressure,
- ✓ available with fixation Pegasos trolley (optional).

The Equus Jet is delivered with its charger and a hydraulic assembly including:

- ✓ an input polyurethane hose pipe with strainer and a filter,
- ✓ output spiral polyurethane hose pipe with quick connector on one side and quick connector with valve on other side, allowing you to change the wands without shutting off the pump thus saving you time,
- ✓ one flushing wand,
- ✓ one diastema wand.



Available with  
trolley fixation



## Equus Jet Connect

ref EJ-EJV21

The Equus Jet Connect is part of the Connect range. All the products in this Connect range work in Bluetooth and allow you to configure the devices between them (pedal, motor, suction) in order to use the systems directly using the wireless pedals or from your smartphone, your tablet. This gives you greater freedom of movement and more practical everyday use.



With the Equus Jet Connect, you will have:

- ✓ a settings and control screen,
- ✓ setting the purge time of the pumps,
- ✓ the real-time temperature of the fluid,
- ✓ the working pressure in real time,
- ✓ the settings (general, pumps, pedals, pairing ... ),
- ✓ the battery level,
- ✓ remote update of the application.

**watch the video**



The Equus Jet Connect can have multiple pumps:

- ✓ high pressure pump (pressure 10 bars, flow 7l/min),
- ✓ cooling pump (pressure 2 bars, flow 450ml/min) in option,
- ✓ peristaltic pump for injection of sterile products (pressure 1 bar, flow 700ml/min) in option.

Product advantages:

- ✓ Lithium Ion battery,
- ✓ 6 levels of pressure possible,
- ✓ wireless remote control,
- ✓ equipped with Bluetooth to work with all products in the Connect range.

The Equus Jet Connect is delivered with its charger and a hydraulic assembly including:

- ✓ an input polyurethane hose pipe with strainer and a filter,
- ✓ output spiral polyurethane hose pipe with quick connector on one side and quick connector with valve on other side, allowing you to change the wands without shutting off the pump thus saving you time,
- ✓ one flushing wand,
- ✓ one diastema wand,
- ✓ an outlet pipe with quick connector on the pump side (for the cooling pump option),
- ✓ A liquid drive pipe with luer lock connector (for the peristaltic pump option).

**Available with  
trolley fixation**



		Equus Jet Eco	Equus Jet	Equus Jet Connect
Battery	Type	Lead-acid	Lithium - Ion	Lithium - Ion
	Duration **	About 1 week	About 3 weeks	About 3 weeks
Pump	Pressure	Up to 10 bar	Up to 10 bar	Up to 10 bar
	Number of pressure levels	1	5	6
	Electronic flow adjustment		✓	✓
	High pressure pump	✓	✓	✓
	Cooling pump			✓*
	Peristaltic pump			✓*
Fixation	Trolley - medical rail		✓*	✓*
	Wall mounting plate		✓*	✓*
Settings	Display screen for general settings			✓*
	Bluetooth - Connect range			✓*
Remote use	Remote			✓*
	Wired pedal		✓*	
	Wireless single Foot Pedal			✓*
	Wireless double Foot Pedal			✓*
Kit	Sinus kit		✓*	✓*
	Water cooling kit			✓*

\*: in option

\*\*: average time depending on your use



## Water cooling pump

ref FAB-EDH51290

Allows handpieces water cooling



## Peristaltic pump

ref FAB-EDH50630

Allows the injection of sterile products



## Trolley mount

ref EJ-MCEJ



## Luer lock wand

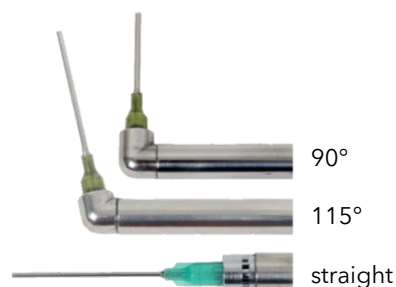
Several luer lock wands are offered to you in order to use needles of different lengths which you can, if you wish, tilt in the desired area.

These wands are used to clean the deep pockets and the pulp canals of the molars.

They are sold without needles.

They are offered in:

- straight, ref EJ-LLLLD02,
- 90°, ref EJ-LDLL90,
- 115°, ref EJ-LDLL115,



## Box of 10 straight needles

ref EJ-AIDG18

Box of needles of different lengths to be used with luer lock wands.



## Flushing wand

ref EJ-LDEJ2

Allowing to rinse in a single gesture, up and down, the horse's mouth.

Large flow with slight pressure to remove food, impurity before and after intervention.

Length: approx. 50cm



## Diastema wand

ref EJ-LDEJ1

Long diastema wand 90° right angle to clean

inter-dental spaces, diastemas, cavities after extraction, wound. Its length allows to go to the bottom of the mouth easily without hurting the horse.

Length: approx. 50cm



## Short straight wand

ref EJ-LDCEJ4

Allows cleaning after incisors extraction and wolf tooth.

Length: approx. 30cm



## Short diastema wand

Ref EJ-LDCEJ3

Length: approx. 29.5cm



## Replacement trigger for wand

ref EJ-GS02



## Suction filter

ref FAB-EDH5057



## Sinus kit

ref EJ-KLS02



## Water cooling set

ref EJ-KWC01



## Sterispray

ref DES-STL2

It's recommended that the Equus Jet system be disinfected at least once a month (during daily use) or when contamination occurs. The product is to be diluted in water and allows you to carry out 25 disinfections.



## Remote control

ref EC-TEC02



## Wired foot pedal

ref EJ-PDC02

The wired foot pedal allows you to control the pressure of the Equus Jet directly with your foot. You keep freedom of movement as well as the availability of your hands while keeping the pressure setting.



## Wireless single foot pedal

ref EL-PC01

The wireless Bluetooth foot pedal allows you to control all range of Connect products. More information in the Connect range.



## Wireless double foot pedal

ref EC-PDC02

The wireless Bluetooth foot pedal allows you to control all range of Connect products. More information in the Connect range.



### Input polyurethane hose pipe with strainer and filter

ref ACC-EJTES  
2 meters



### Output spiral hose pipe

4 meters ref ACC-EJTS4  
2 meters ref ACC-EJTS4.2



### Black input polyurethane hose pipe with strainer and filter

ref ACC-EJTNE02  
2 meters

To use with chlorhexidine, betadine, iodine.



### Black output hose pipe

3 meters ref ACC-EJTN01

To use with chlorhexidine, betadine, iodine.



### Equus Jet Eco charger

ref EJ-CBEP01

Different sockets available: French, Swiss, English, USA

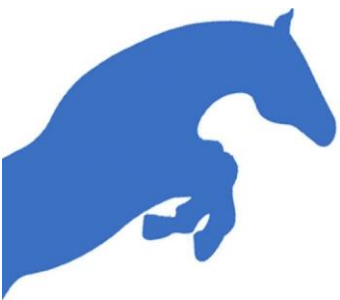


### Equus Jet and Equus Jet Connect charger

ref EJ-CBLI14

Different sockets available: French, Swiss, English, USA





# CONNECT RANGE

Equus Dental Harmony has developed all the products in the Connect range.

All products work in Bluetooth and can be controlled remotely, via pedals, remote controls, as well as through the EDHSetup app.

These products have been designed to allow you to improve the management of your equipment, as well as to limit unnecessary gestures.

Remote controls ...



Remote control  
sans fil



Wireless single foot pedal  
Connect



Wireless double foot pedal  
Connect

...let you control these products:



Equus Jet  
Connect



Equus Liberty  
Connect



Equus Dimmer box  
Connect







## Remote control

ref EC-TEC02

This wireless remote control, equipped with Bluetooth, allows you to control all the products in the Connect range at your fingertips.



## Wireless single foot pedal Connect

ref EL-PC01

This wireless pedal, equipped with Bluetooth, allows you to control all products in the Connect range.

You can change the setting with the Android application, available on smartphone and tablet.

They are also accessible via the "ON" button.

The pallet is used to vary the intensity of a motor or a pump. The push button controls the options such as the reversal the motor rotation direction, the start or stop of the water pump running with the motor...

It turns OFF after 40 min of inactivity.

Magnetic connector for charging, battery life of about 2 weeks, could be more, depending on your use. Charging time is 4h.

Waterproof and easily washable pedal.



## Wireless double foot pedal Connect

ref EC-PDC02

This wireless pedal, equipped with Bluetooth, allows you to control all products in the Connect range.

You can define all of your commands in parallel for the motor, the Equus Jet, the dimmer.

The double pedal is equipped with un double drive with gradual variation and two buttons:

- ✓ right motor rotation,
- ✓ left motor rotation,
- ✓ switch on, switch off the water,
- ✓ switch on, switch off the suction,
- ✓ take picture and videos on endoscope Telepackvet Storz.

The same as the wireless single pedal, settings can be change on the Android application, available on smartphone and tablet.

Magnetic connector for charging, battery life of about 2 weeks, could be more, depending on your use. Charging time is 4h.

Waterproof and easily washable pedal.





## Equus Dimmer Box Connect

ref EC-EDB02

The Equus Dimmer Box Connect allow you to connect a 220v motor and vacuum controlled by the wireless foot pedal. In option you can control the Storz endoscope.

The Equus Dimmer Box Connect is compatible with a 230V motor, Equus Dental Harmony or competitors.

The Dimmer Box communicates with the entire connect range.

Example: paired with an Equus Jet Connect, the pedal activates the motor and the pump at the same time

The motor output (600 watt maximum) is a variable output that allows you to regulate the motor speed.

The suction output can be setup with a delay, this allows you to continue to suck for 3 or 4 seconds after stopping the motor. You can also use a water pump if you wish. Maximum power 1500 watt.

An auxiliary contact output allows you to control endoscopy photos and videos. Currently Storz Telepackvet.

The settings are made directly on the box or through the application.

Case size: 15 X 10,5 X 4,5 cm

Power cable length: about 300cm



**watch the video**



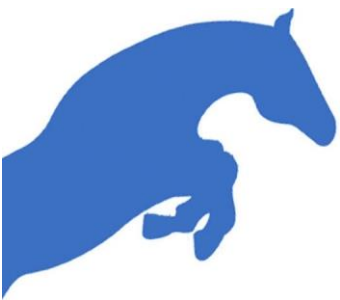
## Cable Storz option Dimmer Box Stortz

ref EC-CLDS02

Cable allows you to connect the Telepackvet Storz to the Equus Dimmer Box Connect.

Length: 300cm





# HEAD LIGHT AND LIGHTING

## Equus Head Light ref ACC-LFEL01

Equus Head Light is a surgical headlight developed for equine dentistry. With remarkable power, it will satisfy you in your daily work.

It has a very good hold on the head, allows 2 adjustments: in height and width as well as an adjustment of the position of the light beam between the eyes for a perfect alignment with what you are looking at and also offers the possibility of placing the battery on the back or on the side.

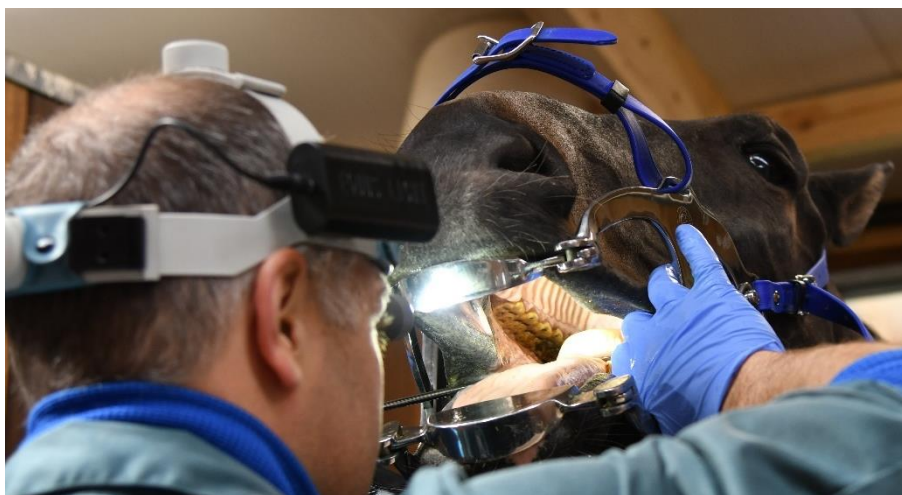
It is equipped with a control box which allows to regulate the intensity of the light and the management of the battery.

The battery, which can last up to 20 hours, is rechargeable and can be easily clipped onto the head support in two places (on the side and behind).

Light intensity: 4 watts

The pack includes:

- ✓ adjustable headlamp,
- ✓ a lithium battery,
- ✓ a charger,
- ✓ a carrying case.



Different battery positions: rear



and side

### Equus Light battery

ref ACC-BEL2C

Lithium-Ion battery



### Equus Light charger

ref ACC-CEL26



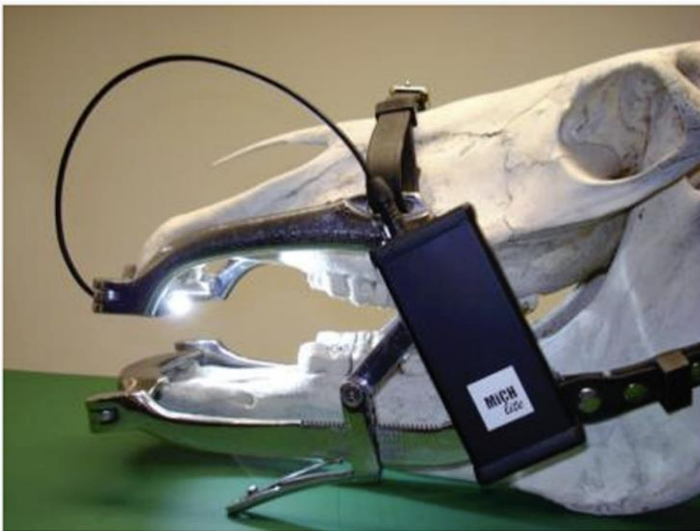
### Mich Lite

ref LAM-MLSL2

Equipped with a powerful LED mounted on a very thin magnetic plate, the mich lite mounts directly on the speculum.

Sold with:

- ✓ the high power LED lamp. 420 lumens. 170° beam,
- ✓ a Lithium-Ion battery, rechargeable 1500 cycles, with low battery indicator,
- ✓ a charger,
- ✓ a magnetic support,
- ✓ a storage case.



### Mich Lite, light only

ref LAM-MICH01

Sold with connection cable.



### Mich Lite Battery

ref LAM-MICH02



### Mich Lite holder

ref LAM-MICH03



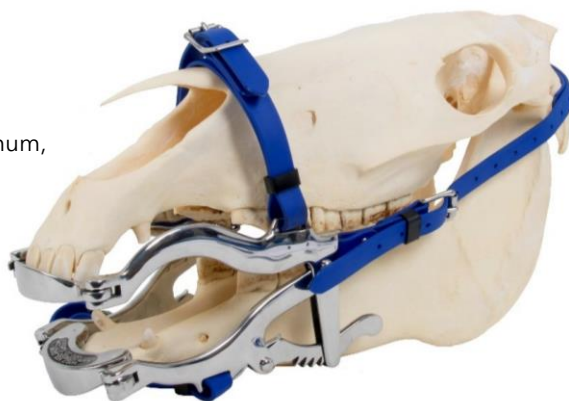


# SPECULUMS AND ACCESSORIES

## 4000 series World Wide Equine

ref OB-WWS4000

- ✓ 6 ratchets,
- ✓ Opening size: 5 cm minimum, 14 cm maximum,
- ✓ 3 heavy duty blue Biothane straps
- ✓ Stainless steel,
- ✓ Sold without bite plates,
- ✓ Weight: 1.95 kg without bite plates.



## 2000 series World Wide Equine

ref OB-WWS2000

- ✓ 29 small ratchets give you a good fit on every horse,
- ✓ Opening size: 0.5 cm minimum, 15 cm maximum
- ✓ 2 heavy duty blue Biothane straps,
- ✓ Stainless steel,
- ✓ Sold without bite plates,
- ✓ Weight: 2.20 kg without bite plates.



## Equus Premium

ref OB-EP02

The plates are designed to hold the parallel branches in order to avoid touching the horse's head.

- ✓ 10 ratchets
- ✓ Opening size: 0.8 cm minimum, 10.3 cm maximum
- ✓ 2 heavy duty blue Biothane straps
- ✓ Stainless steel
- ✓ Sold with half moon bite plates
- ✓ Weight: 3 kg with bite plates



## Equus Millenium pony

ref OB-EMP06

- ✓ 23 ratchets,
- ✓ Opening size: 0.5 cm minimum, 10 cm maximum,
- ✓ 2 heavy duty blue Biothane straps,
- ✓ Stainless steel,
- ✓ Sold with half moon bite plates,
- ✓ Weight: 2 kg with bite plates.



## Equus Premium pony

ref OB-EPP04

- ✓ 10 ratchets
- ✓ Opening size: 1.7 cm minimum, 9.8 cm maximum
- ✓ 2 heavy duty blue Biothane straps
- ✓ Stainless steel
- ✓ Sold with half moon bite plates
- ✓ Weight: 1,8 kg with bite plates



The plates are designed to hold the parallel branches in order to avoid touching the horse's head.

## Offset Gunther

ref OB-GUN01

9 jaw shift positions.  
Sold with Biothane strap and bite plates.  
Used for general anesthesia for intubation, general dentistry as well as  
To perform minimal invasive extraction (buccotomy).



## Spreadbar for speculum

ref ACC-ACMOB01



## Cheek retractor

ref OB-EJ01



## Mouth Wedge

ref OB-OBLT01



The extra wide bite plates keep the mouth gag away from the cheeks for better access.  
Ideal for overjet mouth.  
The rubber prevents the crumbling of the incisors and provides better stability.  
The Equus Premium have special plates.  
On the 2000 series model, only original World Wide Equine bite plates are compatible.

For horse speculum:

## Extra wide bite plates with rubber fitted

ref OB-PPELBC1



## Extra wide bite plates

ref OB-PELB01



## World Wide Equine extra wide bite plates with rubber fitted

ref OB-PWWELC



## World Wide Equine extra wide bite plates

ref OB-PPEWW04



## World Wide Equine classic bite plates

ref OB-PWWE01



## World Wide Equine incisor bite plate rubber

ref OB-PPI01



For pony speculum:

## Half moon bite plates with rubber fitted

ref OB-PPBCP01



## Classic bite plates

ref OB-PSP01



The following elements will allow you to perform x-rays of the teeth for better visibility.

## XtrandR

ref OB-PIXR02

XtrandR Equine x-ray biteplates are a revolutionary set of interchangeable biteplates for your equine dental exam.



## Juliuster, bloc décalage pour radio

ref OB-PIXR02

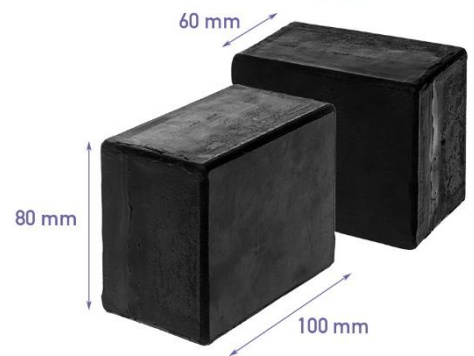
Easy-to-use tool to offset the lower jaw to the left or right for examination with the offset technique in the open mouth.



## Dental X-Block

ref OB-BDR05

Dental x-blocks x-ray blocks that create 60, 80 or 100 mm space between the horse's incisors.  
650 grams.



Replacement set of very resistant and easily washable Biothane straps for disinfection.

## Set of 3 straps

ref OB-RLB01



## Set of 2 straps

ref OB-RLB02



## Pony

ref OB-LLBP02



Replacement springs for speculums

## 4000 serie

ref STO-RSS4



## 2000 serie

ref STO-RSS





# HEAD SUPPORT

## Hanging head holder

ref ACC-STL1

This head support is easy to install and height adjustable. The 4m rope with a clamping system, with a safety piece to prevent any exit from the system. It also has a quick attach carabiner for the head support.

Internal dimensions:  $\pm$  H36cm - L38cm

External dimensions:  $\pm$  H47cm - L52cm

Rope length: 4m

Carabiner strength:

Major axis: 22 kN - Minor axis: 8 kN - Open gate: 7 kN



## Rope for hanging head holder

ref OB-CM

Additional or spare rope for hanging head holder.

The 4m rope with a clamping system, with a safety piece to prevent any exit from the system. It also has a quick attach carabiner for the head support.

Rope length: 4m

Carabiner strength:

Major axis: 22 kN - Minor axis: 8 kN - Open gate: 7 kN



### 2 columns with U support ref ACC-STC1

This adjustable head support is composed of 2 columns allowing you to support the horse's heads.

Its base, aluminum allows you a good stability of the whole.

The U-shaped head support is equipped with a closed-cell foam for the comfort of the horse and is completely covered in chrome leather that is water-resistant and abrasion-resistant.

The head support is completely removable.

Minimum size: 100cm

Maximum size: 170cm



### 2 columns with inclined support ref ACC-STC2

This adjustable head support is composed of 2 columns allowing you to support the horse's heads.

Its base, aluminum allows you a good stability of the whole.

The inclined head support is equipped with a closed-cell foam for the comfort of the horse and is completely covered in chrome leather that is water-resistant and abrasion-resistant. This support has a larger surface where the horse's head rests (ideal for surgeries). To protect the leather and facilitate cleaning in the event of surgery, we also offer a tarpaulin to put over the inclined support.

The head support is completely removable.

Minimum size: 100cm

Maximum size: 170cm

### 3 columns with U support ref ACC-STPU03

This adjustable head support is composed of 3 columns allowing you to support the heads of ponies and horses.

Its base, aluminum allows you a good stability of the whole.

The U-shaped head support is equipped with a closed-cell foam for the comfort of the horse and is completely covered in chrome leather that is water-resistant and abrasion-resistant.

The head support is completely removable.

Minimum size: 80cm

Maximum size: 180cm



### 3 columns with inclined support ref ACC-ST3CE

This adjustable head support is composed of 3 columns allowing you to support the heads of ponies and horses.

Its base, aluminum allows you a good stability of the whole.

The inclined head support is equipped with a closed-cell foam for the comfort of the horse and is completely covered in chrome leather that is water-resistant and abrasion-resistant. This support has a larger surface where the horse's head rests (ideal for surgeries). To protect the leather and facilitate cleaning in the event of surgery, we also offer a tarpaulin to put over the inclined support.

The head support is completely removable.

Minimum size: 80cm

Maximum size: 180cm

### Ball joint

ref ACC-RST01

The ball joint, which is fixed at the place of the aluminium base, allows you to move the columns when the horse is moving.

The ball joint is only compatible with the 3 columns head support.



### U support

ref ACC-SU01

The U-shaped head support is equipped with a closed-cell foam for the comfort of the horse and is completely covered in chrome leather that is water-resistant and abrasion-resistant.



### Inclined support

ref ACC-STATI01

The tilting head support (or inclined plane) is equipped with closed cell foam allowing the comfort of the horse and is completely covered with chrome leather resistant to water and abrasion.

This support has a larger surface where the horse's head rests, than the U-shaped support. It's ideal for surgeries.

It has 7 tilt position.



Length (L) : 40 cm  
Width (W) : 30 cm  
Thickness (T) : 6 cm



### Cover for U head support

ref ACC-HPSU02

Reinforced plastic cover to put on the U head support.

Very easy to clean, with water or jet.



### Cover for inclined head support

ref ACC-HPSI01

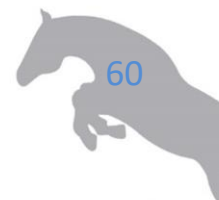
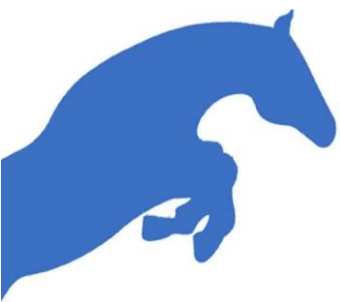
Reinforced plastic cover to put on the inclined support.

Indispensable during surgeries.

Very easy to clean, with water or jet.







# ENDOSCOPY

## Compact camera UBS endoscope

ref ENDO-UE100

The camera and the dual LED light are integrated into the optics.

- ✓ plug and play,
- ✓ Scope diameter: 8mm,
- ✓ Length: 420mm,
- ✓ Viewing angle 70°,
- ✓ opening angle 90°,
- ✓ 360° camera rotation,
- ✓ 2.8m USB cable,
- ✓ waterproof,
- ✓ only 200 grams!

Software (mac and PC) is provided for the use and recording of files in a client folder allowing a detailed report to be made.

Basic computer configuration:

- USB2 port,
- Microsoft Windows 10, 8, 7 or Mac OS Catalina,
- 4.0G RAM, i5 core.

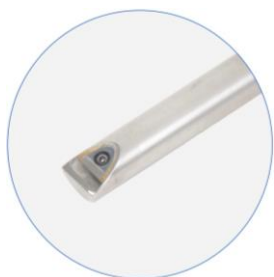
The camera is equipped with 4 buttons for taking photos, videos, adjusting the light and reverse the picture.



## Karl Storz endoscope

ref ENDO-KSTOR01

The Karl Storz endoscope, conceived for intraoral applications, has a length of 44 cm and a viewing angle of 70°. The Karl Storz intraoral endoscope is ergonomic and provides excellent views of otherwise hard to view areas of the patient's oral cavity. A rotatable light connector (340°) and irrigation connector (360°) on the irrigation sheath provides easier handling and manipulation of the scope during examinations and procedures. The endoscope is completely soakable, making the cleaning process easier, while eliminating any concern of damaging the scope with water intrusion.



In option:

The protective sheath allows you, not only to protect the endoscope, but also to rinse the lens, thanks to the irrigation valve. ref ENDO-KSTORC02

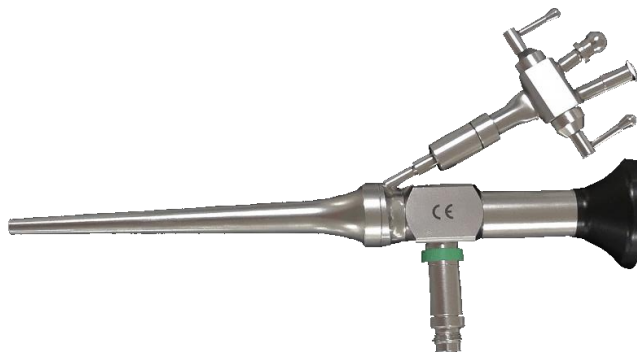
The irrigation sheath facilitates the use of fluids during examinations for faster cleaning of the interdental spaces. ref ENDO-KSTORC03

The use of the protective sleeve is strongly recommended.

## Sinus endoscope

ref ENDO-R10

0° rigid endoscope with working channel and irrigation.  
Ideal for sinus cleanings and wolf tooth extraction.  
Flexible instruments can be used simultaneously through the integrated working channel.  
Diameter: 5.5mm  
Irrigation: 6mm  
Working channel: Ø 1.7mm  
Length: 90mm



## Endoscopic USB 3 camera

ref ENDO-CUSB30

Transform your PC into an endoscopic dental unit with this USB 3 camera.  
High-definition USB 3 endoscopic camera, ideal for mobile clinics and veterinarians.  
Compact system, light source built into the camera and detachable, equipped with a zoom F15~25.  
You can choose the settings of the 2 buttons (photo, video, freeze, ...)  
IP58 waterproof camera, full HD 1920\*1080.  
Light power: 5 watts. Intensity 28200 lux, colors 5700K. 5 intensity levels and white balance are adjustable.  
Compatible with all endoscopes with a type C mount.  
It's possible to change the light source for better image quality with the UBI Light.  
Sold with 3m cable and software.



## Equus Light source

ENDO-ELS50

A robust metal case designed for ambulatory use.  
Gradual adjustment of the light intensity using a wheel.  
High light output thanks to LED technology.  
Power: 50watts  
Light output: 900,000 lux  
Color temperature: 5300K  
Power supply: 12V, 8A

Supplied with a carrying case, a light source, a 3m fiber optic cable equipped with a Storz connection, a 230V power supply.  
Weight 1.85 kg without case, 2.80 kg with case.



## Equus Light source stick

ENDO-ESLP5W

Power: 5 watts,  
Color temperature: 5700K - 6500K,  
Light output: 200,000 lux,  
3 light power settings,  
Rechargeable battery and its charger,

3 different adapters are included to connect different endoscope brands (Storz, Wolf, fiber optic cable).  
Weight: 90gr.



Adaptater 1  
Wolf



Adaptater 2  
Storz



Adaptater 3  
Fiber optic cable

## Ubi Light

ref ENDO-CFL35

UBILIGHT is the perfect compact LED light source to use with a USB camera in the clinic or in the ambulatory use.

Light intensity: 30 watts LED equivalent to a 100W Xenon light source

Color temperature: > 4500° K

Type of protection: IPX0 (not waterproof)

Power supply: 100 - 240 VAC / 50 - 60 Hz

Dimensions (W x H x D): 180 x 95 x 35 mm

Weight: 320g

Best product size / light intensity ratio on the market!

Compatible with Storz® light cables (Olympus® optional).

Light source sold with Storz light cable.



## Cable de lumière Ubi Light

ref ENDO-CFL35

Compatible with all light sources and autoclavable at 134°C (273.2°F).

Reinforced sheath.

Comes with connectors for Storz endoscope.

Length: 3m.



## Portable endoscopic unit

ref ENDO-MECS02

Autonomous station allowing viewing (thanks to its screen) and recording on SD

card of your work. You can also use your PC or another screen.

Full HD waterproof camera, 1920 x 1080

Powerful light source (48 Watt)

Compatible with all endoscopes with a type C mount.

Sold with 3M cable and software.

Sold without endoscope.



## Portable endoscopic unit 4K

ref ENDO-U4K

Portable endoscopic unit 4K. Ideal for equine dentistry, outpatient surgeries or clinic.

"all in one" system, the unit is composed of a camera, a 4K screen, a powerful light source.

The recording is done on a UBS stick.

Screen:

- ✓ 4K medical,
- ✓ 17.3",
- ✓ 1.07 colored billon,
- ✓ input 4K HDMI,
- ✓ can be used as a screen extension,
- ✓ JPG photo and MP4 video recording on USB stick,
- ✓ dimensions : 413mm x 291mm x 40mm,
- ✓ 110V/230V power supply.

Light source:

- ✓ powerfull LED,
- ✓ 60 watts adjustable,
- ✓ 2.000.000 lux.

Camera:

- ✓ waterproof IPX7,
- ✓ zoom F15~25,
- ✓ equipped with 2 configurable buttons of your choice (pictures, videos, freeze...),
- ✓ type C mount,
- ✓ supports different disinfection methods (gas, submerged).



## Set unit 4K, Storz endoscope

ref ENDO-PESTORZ

This set is composed of:

- ✓ a portable 4K endoscopic unit,
- ✓ a Karl Storz endoscope,
- ✓ a protective shirt of the Karl Storz endoscope.



## Set Storz endoscope and USB 3 camera

ref ENDO-PEC03

This set is composed of:

- ✓ a Karl Storz endoscope,
- ✓ a USB 3 camera with integrated light source,
- ✓ a software.



## Set endoscope

ref ENDO-PE30W

This set is composed of:

- ✓ a Karl Storz endoscope,
- ✓ a USB 3 camera,
- ✓ an Equus Light Source,
- ✓ a software.





# STOMATOLOGY

## ➤ INCISOR AND WOLF TEETH ELEVATORS

The elevators allow the ligaments and gums to come off the teeth. In stainless steel, Equus Dental Harmony guarantees you quality tools that will withstand the vagaries of everyday life.

### Curved wolf teeth elevator

Curved elevator right or left  
Length: 15,5 cm  
Stainless steel



### Long elevator

Long elevator available in 4 mm and 5 mm, curved or straight  
Length: 30 cm  
Stainless steel



## ➤ ELEVATOR SET

### Set of 2 elevators

ref STO-L2EDL  
Set of 2 elevators: 1 straight elevator + 1 curved elevator  
Length: 23 cm  
Stainless steel



### Set of 4 elevators

ref STO-L4DL  
Set of 4 elevators: 4 and 5 mm straight, 4 and 5 mm curved  
Length: 26 cm  
Stainless steel



### Set of 6 incisor elevators

ref STO-L5EI  
- 7mm straight/ curved/ reverse curved  
- 10mm straight/ curved/ reverse curved  
Length: 26cm  
Stainless steel



## ➤ BURGESS

### Classic burgess set

cut-out heads ref STO-KB02 / circular heads ref STO-KB03

The burgess classic set allows the extraction of wolf teeth.

It's composed of:

- 1 handle grip
  - 1 straight extension
  - 1 curved extension
  - 4 interchangeable heads, cut-out or circular, on your choice
- Stainless steel



### Replacement heads for burgess

Cut-out heads: 5 diameters available (4, 6, 8, 10 et 12mm)

Circular heads: 5 diameters available (4, 6, 8, 10 et 12mm)



### ➤ CURETTES

#### Curette

Available in 2mm, 4mm ou 6mm diameter

Length: 16,5 cm

Stainless steel



#### Double curette

ref STO-CURD56

2mm and 4mm diameter

Length: 20,5 cm



### ➤ COMPOUND RONGEUR

The compound rongeurs allow to cut the flesh. Thanks to the non-slip handle, you work in complete safety even with wet hands.

#### Rongeur straight

ref STO-PGDRD2

Length: 23 cm

Stainless steel



#### Rongeur curved

ref STO-PGRC01

Length: 23 cm

Stainless steel



### ➤ WOLF AND INCISOR TEETH FORCEPS

Forceps allows extraction of teeth. Stainless steel quality and non-slip handle, you can work in complete safety even with wet hands.

#### Incisor spreader

ref DAV-DSI001

Length: 18 cm

Stainless steel



#### 8" bent forceps

ref DAV-DCDL8

Length: 20 cm

Stainless steel



#### Set of 4 wolf teeth forceps

ref DAV-LDL04

Two straight and two 90° forceps.

Stainless steel



## Wolf teeth root forceps

ref DAV-DDLF20  
Length: 20 cm  
Stainless steel



## Duck bill incisor forceps

ref STO-DAVDI11  
Length: 28 cm  
Stainless steel



## Long wolf teeth root forceps

ref DAV-DDLFL30  
Length: 30 cm  
Stainless steel



## ➤ PROBES, PICKS AND MOLAR ELEVATORS

Picks and probes allow everyday care, such as cleaning diastemas, cavities, food debris or to remove the gums.

### Dental explorer

ref STO-SDE  
Interchangeable head.  
Length: 40 cm  
Stainless steel



### Dental explorer replacement head

ref STO-RTSE01  
Replacement head for dental explorer probe.



### Banded periodontal probe

ref STO-SDPE02  
Length: 45 cm  
Stainless steel



### K-files handpiece

ref EN-L2L  
Short support length: 18cm  
Long support length: 42 cm  
Sold without files  
Stainless steel



### Periodontal excavator

Left or right  
Length: 46.5 cm  
Stainless steel



### Long pic bent

ref STO-LPC  
Length: 47 cm  
Stainless steel



### Gingiva pick 90°

ref STO-PG01  
Length: 47 cm  
Stainless steel





## Set of 3 molar picks

ref STO-L3PDM  
Length: 50 cm  
Stainless steel



## Set of 2 gingiva elevators

ref ART0035  
Length: 36 cm  
Stainless steel



## Interchangeable elevators, set de 3 handles

ref STO-EIS03

A set composed of:

- 1 handle with an inclination of 0°
- 1 handle with an inclination of 8°
- 1 handle with an inclination of 30°
- 5 separators of different lengths
- 5 elevators of different lengths
- 5 curettes of different lengths
- 5 probes of different lengths
- 1 support for the different heads

Length of handles without heads: 36cm  
Stainless steel



## ➤ CAPS FORCEPS

### Hewson

ref DAV-DSH01  
Length: 41cm  
Stainless steel



## 4 root forceps

ref DAV-DDL4D  
Length: 41 cm  
Stainless steel



## ➤ MOLAR FORCEPS

### Horse serrated molar forceps

ref DAV-DM03  
Length: 48 cm  
Stainless steel





## Pony serrated molar forceps

ref DAV-DMP04

The jaws are smaller on the pony forceps.

Length: 40,5 cm

Stainless steel



## Maxillary serrated molar forceps

ref DAV-DMM

Length: 49 cm

Stainless steel



## Horse molar spreader

ref DAV-DSM07

## Pony molar spreader

ref DAV-DSP02

Use: to separate teeth before extraction

Available in size 4, 5 et 6mm.

Horse size length: 48 cm

Pony size length: 40.5cm

Stainless steel



4mm

5mm

6mm



4mm

5mm

6mm

pony

## 4 root molar forceps

ref DVA-DU4D04

Length: 49 cm

Stainless steel



## Fragment forceps

Available in universal (more resistant), or in size 4, 6 et 8cm.

ref DAV-DFMU, DAV-DFM4, DAV-DFM6, DAV-DFM8



4cm

6cm

8cm

universal

## Sagittal fragment forceps

ref DAV-DSF01

Length: 48.5 cm

Stainless steel



## Duck bill forceps

ref DAV-BCL  
Length: 48.5 cm  
Stainless steel



## FULCRUMS

### Fulcrum

ref DAV-FULC1  
Different sizes on each side to help you as you extract.  
Length: 43cm  
Stainless steel



### Interchangeable fulcrum

ref STO-L8F02  
Different sizes on each side to help you as you extract.  
Length: 43cm  
Stainless steel



## DIASTEMA CARE

### Alligator forceps

Alligator forceps available in 15, 25, 30, 40 or 50mm  
Length: 40.5 cm  
Stainless steel



### Diastema forceps

Length: 30 cm (ref DAV-DDF06) or  
35cm (ref DAV-DDF07)  
Stainless steel



### Double head forceps

ref DAV-DDF08  
Length: 32 cm  
Stainless steel



## ANESTHESIA

### Anesthesia syringe holder Support seringue anesthésie

Ideal for administering a local anesthetic.  
Needles will only fit syringes with European threads.  
Needle and cartridges not included.  
Stainless steel  
3 sizes are available (base to needle):  
- 8cm, ref ACC-SAL8,  
- 25cm, ref ACC-SAL1825,  
- 40cm, ref ACC-SAL2240.





## Anesthetic gun

Ideal gun for administering local or intra-ligament anesthetic.  
For use with a 1.8ml cartridge.  
Stainless steel.  
Needle and cartridges not included.  
Needles will only fit syringes with European threads.



## Box of 100 needles

27G 0.40mm X 16mm ref AIG0.416  
27G 0.40mm X 21mm ref AIG0.421  
27G 0.40mm X 42mm ref AIG0.442  
25G 0.50mm X 35mm ref AIG0.535



## ➤ MIRRORS

### Dental mirror 25mm lens, interchangeable heads

ref STO-MI01  
Kit composed of 5 interchangeable mirrors of 25mm as well as a handle.  
Length: 44.5 cm  
Stainless steel



### Dental mirror 25mm lens

ref STO-M25  
Dental mirror 25mm with 25° angle  
Length: 28 cm  
Stainless steel



### Dental mirror 40mm lens

ref STO-M40  
Dental mirror 40mm with 25° angle  
Length: 40.5 cm  
Stainless steel



### Dental mirror 50mm lens

ref STO-MD01  
Dental mirror 50mm with 25° angle  
Length: 47.5 cm  
Stainless steel



### Spare mirror

ref STO-ACC01  
40mm or 50mm



### Anti-drops spray

ref ANTIBU  
100ml



### Denatured alcohol

ref ALCOOL  
Denatured alcohol reserved for professional dental use.  
1L



## ➤ ACCESSORIES

### Spatula

ref STO-S01  
Length: 17.5 cm  
Stainless steel



### Curved scissors

ref STO-CC02  
Length: 20 cm  
Stainless steel



### Short bowel clamps

Clamp forceps, straight or curved  
Straight: ref STO-PCD05  
Curved: ref STO-PCC04  
Length: 18 cm  
Stainless steel



### Long bowel clamps

ref STO-PCCDL05  
Length: 40,5 cm  
Stainless steel



### Scalpel

Precision scalpel, surgical grade, available in two versions.  
Each scalpel is sold in its case with an attached blade and a sterile spare blade.  
N° 1: flat handle, handle length 10.5cm, length with blade 16cm. High carbon steel blade n° 22.  
Ref STO-SCAL1.



N° 3: rounded handle with grip on the front, handle length 12.5cm, length with blade 16.5cm. High carbon steel blade n° 15.  
Ref STO-SCAL3.



### Hammer with nylon end

ref STO-MBN1  
Hammer with interchangeable nylon end.  
400 grams. The heavier a hammer, the greater the force it will exert.  
Length: 19.5 cm  
Stainless steel



### Replacment nylon end

ref STO-MBN1R



### Kidney dish

ref STO-BH012  
Useful dimensions: 30cm X 14cm X 4cm  
Stainless steel

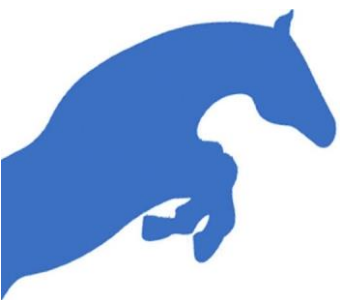


### Storage box

ref STO-BRI  
It's equipped with a hook to secure the closure and prevent it from being opened accidentally.  
Ideal for storing stomatology equipment as well as heads and diamond handpieces.  
Dimensions: 30cm X 15cm X 5.5cm.  
Stainless steel.







# DENTAL CARE PRODUCTS

## Natural sanitizer bio

ref SOI-ABB03 250ML  
ref SOI-ABB02 500ML  
ref SOI-ABB5 5L

Concentrate solution to dilute in the water, made from organic essential oils 100% pure and natural respect of the horse's mouth.

Designed for mouthwash before and after intervention of the practitioner or current care following a wound or tooth extraction.  
Products developed in collaboration with Loen.



## Trauma buccal

ref ART0009

Trauma Buccal is a natural product to heal the wounds in the horse's mouth and relieve all bone trauma, especially on the bars.  
Helps in the resorption of mandibular periostitis.



## Equident Matrix

ref SOI-EDM02

EquiDent Matrix is 100% organic and natural product promoting healthy teeth and gum.  
Strengthens and protects teeth and gums.

Relieves toothache, better regeneration of the mucosa and gums in case of diastema, inflammation, periodontitis, extraction with infection, tooth decay, discomfort with the bit, serious laceration in the oral cavity and supports in various dental diseases like EOTRH (Equine Odontoclastic Tooth resorption Hypercementosis).  
300 grammes.



## Fungi-dent

ref FUNGI

Supports painful and inflamed gums

Ingredients: Water, MSM, Prebiotics, Extracts of Salix Alba, Boswellia Serrata and Yucca Schidigera, Bromelain, Curcumin, Schizophyllan, citric acid. Technological additives: aroma, potassium sorbate.

Use: Basic feed supplement for horses.

Dosage: Starting dose: 20 ml 2x / day for 30 days, then maintenance dose: 20 ml 1x / day.

Minimum recommended duration of administration: 2 months. Interrupt the treatment 72 hours before the competition.

1L.





## DENTAL CARE PRODUCTS

### Hand mix dental putty

ref SOI-PIM

Ideal for filling diastema temporarily, block the spaces after molar extraction.  
Pot of 445gr.



### Etchin gel

ref SOI-GMAP05

Used to prepare the cavity before applying Voco adhesive.  
Phosphoric acid 37%.



### Resin composite Structur 2 SC - Voco

ref SOI-RS2

Voco composite resin without light-curing.  
Restores teeth for cavities and creates bridges for diastemas.  
75g cartridge.



### Provicol C - Voco

SOI-PRO65

65g cartridge.



### Long dispenser gun

ref SOI-P3M

For using the 50ml cartridge.  
Sold without cartridge.



### Impression material putty

ref SOI-PVPS3M

All very accurate to fill diastema temporarily or block the spaces after molar extraction.  
The pack contains:

- 1 cartridge of 50ml,
- 4 mixing tips,
- 4 intra oral tips consumables.



### Voco adhesive

ref SOI-AFU04

Voco adhesive with light-curing.  
Apply before the resin.



### Resin composite Structur 2 QM - Voco

ref SOI-RS2QM

Voco composite resin without light-curing.  
Restores teeth for cavities and creates bridges for diastemas.  
8g cartridge.



### Provicol QM - Voco

SOI-PRO5

5ml cartridge.



### Small dispenser gun

ref SOI-PQUICK

For using the 1:1 cartridge (small cartridge).  
Sold without cartridge



## Extension for long dispenser gun

ref ACC-EXG



## Extension for small dispenser gun

ref ACC-EXP



## Mini Led active, curing light

ref SOI-LPML02

- ✓ power of 1492 mW / cm<sup>2</sup>, (Ø7,5mm light guide)
- ✓ emission in the most effective light spectrum and most suitable for all composites
- ✓ unique cycle of 10sec (with microflash at 5 sec)
- ✓ compact and lightweight (103 grams)
- ✓ integrated battery
- ✓ long load life, 100 cycles of 10 sec to enjoy a full day of polymerization
- ✓ weighted, MiniLED Active does not roll, for ease of use and protection against falls
- ✓ rotation of the optical waveguide 360 °
- ✓ Wavelength: 420 - 480 nm
- ✓ DM Class IIB



## 1007 Led curing light

Powerful, light and handy curing light.

Intensity: 5W > 1100 mW/cm<sup>2</sup> 0

3 modes: gradual, flash and full power

Time: 10, 20, 30 and 40 seconds

Beep. Automatic shutdown after 8 minutes of non-use

Wavelength: 430 - 485 nm

Lamp size: 175 mm x ø 22 mm

Weight: 165g



## Set of 10 mixing tips

ref SOI-L5EML

Set of 10 long mixing tips with intraoral connector for resin or VPS cartridge paste.

Length of 17 cm with intraoral mouthpiece.

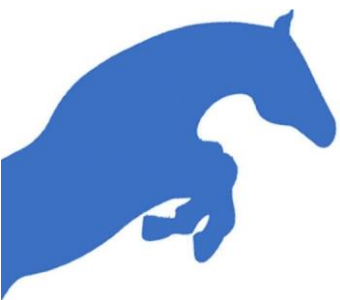


## Set of 10 mixing tips with luer lock connector

ref SOI-L10EM

Set of 10 long mixing tips with luer lock connector for use with needles.





# ACCESSORIES

## SCANdroid, working seat

ref ACC-SRRS1 without extension  
ref ACC-SRRSEC with short extension  
ref ACC-SRRSEL with long extension  
ref ACC-SRRS1 with short and long extension

The SCANdroid modular seat is ideal for any mobile equine veterinarian and dentist. With its 4 different working positions the SCANdroid is a versatile, easy-to-use device for the practice of equine and veterinary dentistry today. It is easy to install and lightweight for easy carrying. Under the seat, it has storage space for the necessary tools, and also storage for the cylinder during transport. It has great stability with its 5 swivel wheels, 2 of which have locking device. The gas spring allows height adjustment without bearing.

The SCANdroid is CE marked Class 1 medical product.

The working heights are as follows:

- ✓ SCANdroid: 23 cm + 38 - 51 cm
- ✓ SCANdroid with short extension: 23 cm + 38 - 64 cm
- ✓ SCANdroid with long extension: 23 cm + 38 - 51 cm + 63 - 75 cm
- ✓ SCANdroid with short and long extension: 23 cm + 38 - 75 cm

Transport measures:  $\varnothing 40 \times 23$  cm

Total weight: 9.3 kg



## SCANdroid protective cover

Easy to clean, can be hosed down.  
The cover is also designed for transport.



## SCANdroid coverplate

To protect the bottom of the scandroid from dust and dirt.



## NewCart

ref ACC-NEWCART only NewCart  
ref ACC-NEWCARTP with ProbeRack  
ref ACC-PROBERACK only ProbeRack

This veterinary/medical cart is ideal for mobile and stationary use with big and small machines/equipment such as endoscopy. It comes with a built-in gas spring for variable, stageless height adjustment. Storage space in bottom. Transporting is made easy with the pull-out handle. Easy storage in a vertical position. Proberack in option.

Transport size: 64 x 46 x 30 cm  
Weight: 19 kg  
Plateau size (inside rim): 57 x 37 cm  
Height-adjustment from 30 to 106 cm  
Maximum load: 15 kg  
4 swivel, lockable Ø 100 mm castor wheels



## DRagster

ref ACC-DRAGSTER only DRagster  
ref ACC- DRAGSTERP with ProbeRack  
ref ACC-PROBERACK only ProbeRack

The DRagster is the powerhouse among veterinary carts. It is built of durable aluminium material, fully height-adjustable and suitable for heavy machinery and equipment. It has 3 different positions (25 cm, 25 cm, 86 cm height). The large wheels make it easy to move around on uneven surfaces.

It can be stored in a vertical position to save space. Easy transport position with the pull-out handle. It works great as a mobile cart for small and oversized equipment. And also, for your DR-flat panel suitcase. Proberack in option.

Transport size: 64 x 52 x 27 cm  
Weight: 14,5 kg  
Plateau size (inside rim): 58 x 46 cm  
Height-adjustment from 30 to 106 cm  
Maximum load: 35 kg  
2 big ø20 cm wheels  
2 locking ø 12.5 cm castors



## Drenching gun

ref PRBV-250ML  
250ml manual drenching gun, used with one hand, abundant rinsing. Ideal for rinsing the horse's mouth and making mouthwashes. Completely removable for cleaning. Transparent bowl, resistant to boiling water with graduations indelible in relief. Comes complete with a 10mm cannula, instructions for use and a bottle of silicone oil.

## Drenching syringe

ref ACC-SR400  
450 ml manual syringe in plastic tube, rod and plastic handle. Brass cannula. Transparent bowl, resistant to boiling water with graduations indelible in relief. Sold with a 10mm cannula, instructions for use and a bottle of silicone oil.





## Plexiglas drenching syringe

ref ACC-SR300

300ml manual syringe.

Tube in extruded plexiglass, bottom, cap and piston in aluminum polished. Aluminium rod and handle made of unbreakable and non-deformable plastic.

Marking of indelible black graduations.

Sterilization: resistant to boiling. Completely removable.

Sold with a 10mm cannula, instructions for use and a bottle of silicone oil.



## Water heater

ref ACC-CH1000W

Ideal and essential for winter dentistry, it allows you to work in the coldest conditions by having hot water quickly (about 5 minutes).

It hangs on the edge of the bucket (use only metal buckets).



## 12L stainless steel bucket with rubber

ref ACC-SI12LC

12 liters stainless steel bucket with a rubber bottom.



## 10L stainless steel bucket

ref ACC-SIE10L

Economic stainless steel bucket 10 liters.



## Safety glasses

ref ACC-LDS

Protective glasses ideal for the practice of equine dentistry.

Very light and comfortable.

Treatment for water drainage.

Anti-scratch and anti-fog.



## Nitrile gloves

ref ART007 size M

ref ART008 size L

Very resistant blue nitrile gloves for dentistry.

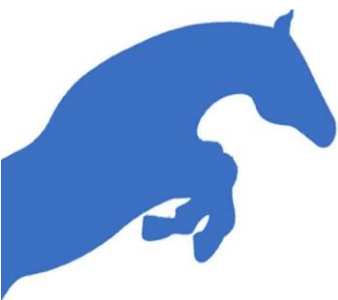
Reinforced and non-slip gloves on the fingertips for safe control of your tools.

Box of 100 gloves.

Available in size M (size 7 approximately), size L (size 8 approximately) with short sleeves and size L (size 8 approximately) with long sleeves.







# CLEANING PRODUCTS

## Ballistol oil

ref FRA-5B200 - 200ml

ref FRA-SBS00 - 500ml

The active components contained in Ballistol are of natural origin.

Ballistol is free from resin and acid and is unalterable to aging.

It is a very good product to lubricate your tools while respecting the flora of horses.



## 35ml grease jar

For use on inner drive cable and inner extensions.



## Grease gun

ref FRA-PG1

Grease gun allows you to grease handpieces fitted with a grease nipple.



## Grease for handpiece

ref FRA-GAF04

Orapi edible fat.

Resists water and detergents, direct and centralized lubrication. For lubrication of bearings, mechanisms.



## Stainless steel brush - small

Small grey brush ACC-BIF04

Stainless steel brush for cleaning diamond burs.

Length 16.5cm, pile height 1.5cm



## Stainless steel brush - large

Normal yellow brush ACC-PBI02

Stainless steel brush for cleaning diamond burs.

Length 26.5cm, pile height 3cm



## Pure green 24

ref SOI-PG24120 - 120ML

ref SDC-PG960 - 960ML

PureGreen24 (also marketed as Thrush Ender) is based on a patented new molecule, silver dihydrogen citrate (SDC). It is the first new antimicrobial in decades. SDC is an electrolytically generated source of stabilized ionic silver that, when formulated as a disinfectant, is colorless, odorless and non-staining.

Its action spectrum is one of the widest on the market and ensures very effective asepsis without being necrotizing.

It can find plenty of use in the care around the horse or maintenance of your equipment.





## Steri-7

ref SOI-DCS7

Premium disinfectant for everyday equine dentistry.  
Disinfectant that eliminates 99.9999% of pathogens in seconds!  
Bactericidal, virucidal, fungicidal and sporicidal action.  
Continuous action after soaking.  
This preparation is intended to be diluted in water.  
5L



## Deterback

ref DES-DIDS

Cleaner and disinfectant by soaking or ultrasonic instruments.  
5L



## Denatured alcohol

ref ALCOOL

Denatured alcohol reserved for professional dental use.  
1L

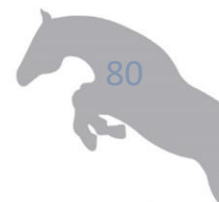


## Sterispray disinfection of equus jet

ref DES-STL2

Allows disinfection and cleaning of Equus Jet.  
500ML





+33 (0) 4 74 72 47 85

+33 (0) 6 70 88 78 70

info@equus-dental-harmony.com

fdallosteria@gmail.com

[www.equus-dental-harmony.com](http://www.equus-dental-harmony.com)

SARL Equus Dental Harmony  
85 chemin de la plage  
69270 Rochetaillée sur Saône  
France

RSC Lyon 529 500 035  
CHE 359-254-987

